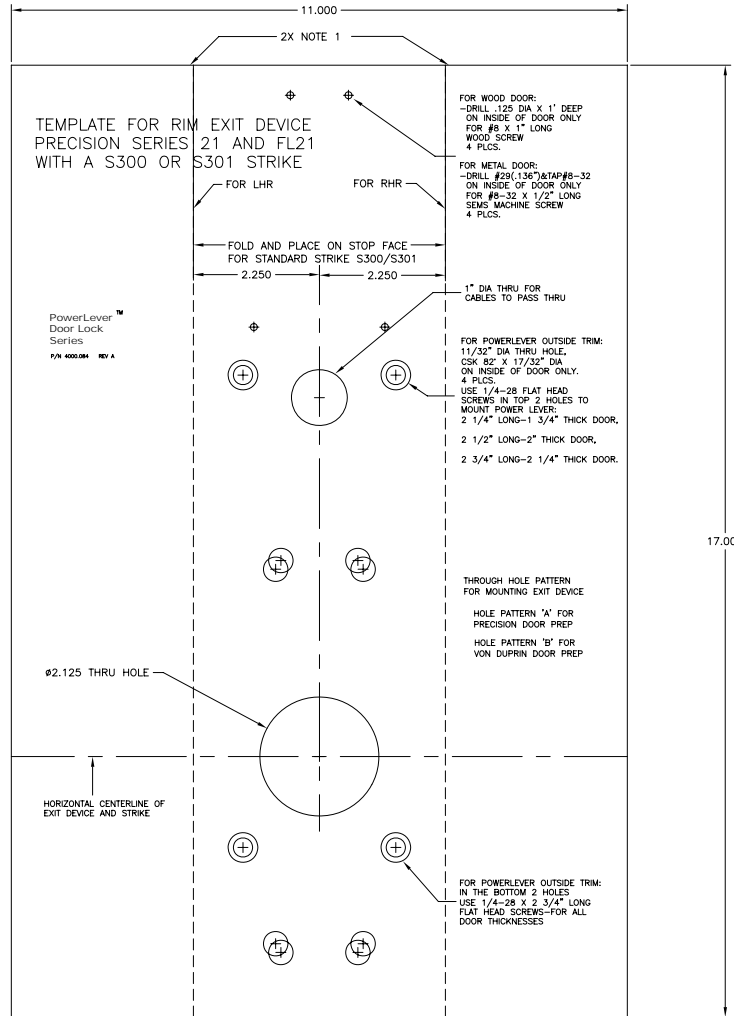


LIMITED RIGHTS IN DATA  
 THIS DOCUMENT CONTAINS PROPRIETARY AND TRADE  
 SECRET DATA OF THE KARMA MAS CORPORATION.  
 IF NOT SET AS USED, REPRODUCED OR RELEASED IN  
 WHOLE OR IN PART FOR ANY PURPOSE OTHER THAN  
 THAT AUTHORIZED BY THE KARMA MAS CORPORATION,  
 REPRODUCTION MUST BE IN WRITING.

REV.	ECD #	REV. BY:	CHKD BY:	DATE
A	1041			04NOV04

**REFERENCE ONLY, NOT TO SCALE**  
**DO NOT USE AS A DRILLING TEMPLATE**  
**CALL 800-849-8324**



NOTES

- 1) PERFORATE ALONG LINE TO AID FOLDING,  
 APPROXIMATELY 10 PERFORATIONS PER INCH.  
 PERFORATIONS TO BE WITHIN .005" OF PRINTED LINE
- 2) BLACK INK ON WHITE PAPER
- 3) ALL TEXT AND DIMENSIONS SHOWN WITHIN THE  
 11 X 17 OUTLINE IS TO BE PRINTED.

REF. ASME Y14.5M-1994

<b>KARMA MAS</b>		749 W. SHORT ST. LEXINGTON, KY 40508 PHONE 858-353-4744	
TITLE	DR.	CHK.	APP.
TEMPLATE, PRECISION 2100 SERIES	CVN	STH004	STH004
MATERIAL	DR.	SEP	STH004
SCALE	SHEET	SIZE	REV.
1:1	1 OF 1	D	4000.084 A

## SPECIAL INSTRUCTIONS FOR PRECISION EXIT DEVICE

### FIRE VERSION

- When retrofitting to a door that already has a FL-1103 fire rated rim exit device installed, a new exit device chassis backplate assembly must be installed to position the drive cam cross below the latchbolt.

**Note that the opposite handing must be ordered for a given door handing.**

The backplate assembly P/N for a LHRB door is PB-1103F-RHRB.  
The backplate assembly P/N for a RHRB door is PB-1103F-LHRB.

- Also, the auxiliary dead latch bracket assembly must be reversed.
- Further, the appropriate chassis cover with the required finish must be ordered to facilitate the reversal of the auxiliary dead latch bracket assembly.

The chassis cover P/N for a LHRB door is 1123-01(FL 1100)-RHRB.  
The chassis cover P/N for a RHRB door is 1123-01(FL 1100)-LHRB.

These parts should be ordered from Precision Hardware, Inc.

### PANIC VERSION

- When retrofitting to a door that already has a 1103 non-fire rated rim exit device installed, the exit device chassis backplate assembly must be reversed (rotated 180 deg) to position the cross in the drive cam below the latchbolt.

### BOTH VERSIONS

- When ordering a new rim exit device (1103 or FL-1103), order the opposite handing. For instance, if the door to be fitted is LHRB, then a RHRB must be ordered. This must be done to position the cross in the drive cam below the latchbolt.
- For both FL-1103 and 1103 rim exit devices, if manufactured prior to January 2000, the drive cam must be changed to insure full retraction of the latch bolt. The drive cam comes attached to the backplate assembly.

#### Fire version:

The backplate assembly P/N for a LHRB door is PB-1103F-RHRB.  
The backplate assembly P/N for a RHRB door is PB-1103F-LHRB.

#### Panic version:

The backplate assembly P/N is PB-1103. This part is not handed.

These parts should be ordered from Precision Hardware, Inc.

