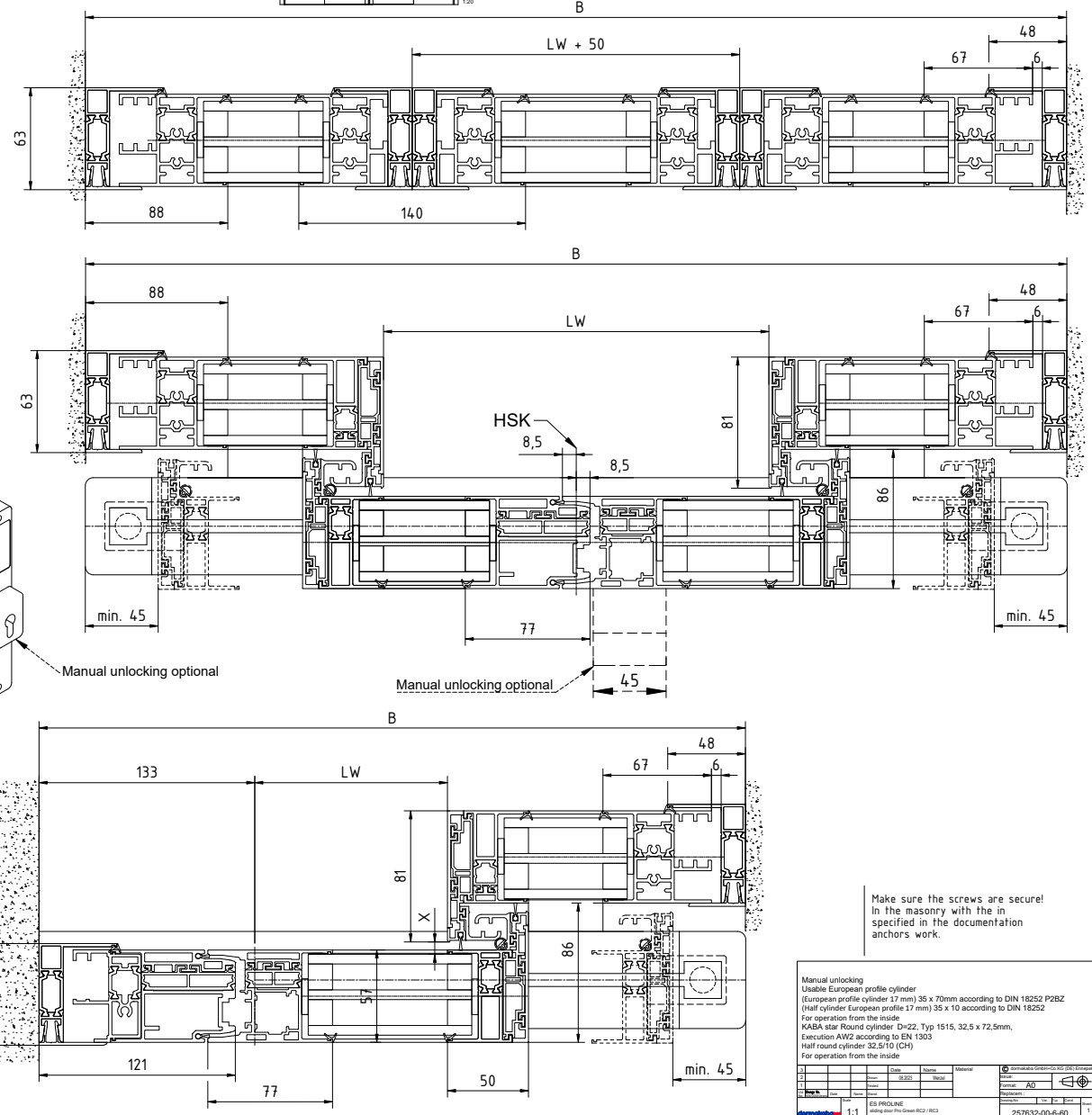


Attention!  
the safety equipment of the automatic door must correspond to the risk analysis according to DIN 18650

FFL	Finished floor level	Pro Green ES 400 PRO	Weight
LW	Passage width	1-leaf	1-leaf
LH	Clearance height	LW 800 - 3000	ES 400 PRO 1 x 250 kg
H	Installation height	B min. = 2 x LW + 233 (with fixed part / with post width 121mm)	
X	Noticed	2-leaf LW 1000 - 3000 B min. = 2 x LW + 207 (with fixed part / without post width)	2-leaf ES 400 PRO 2 x 200 kg
According to EN 16005 / DIN 18650 Construction and testing principles for automatic. For doors, this dimension may only be 4 - 8 mm.			

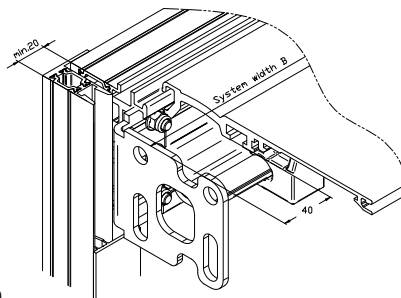


Make sure the screws are secure!  
In the masonry with the in specified in the documentation anchors work.

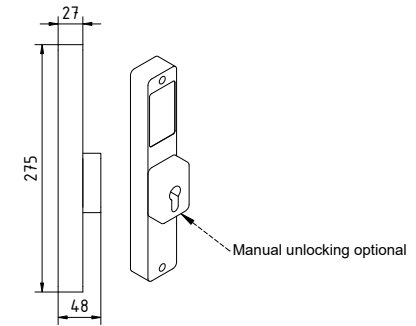
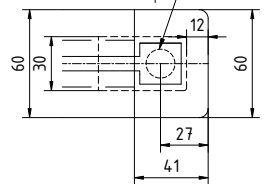
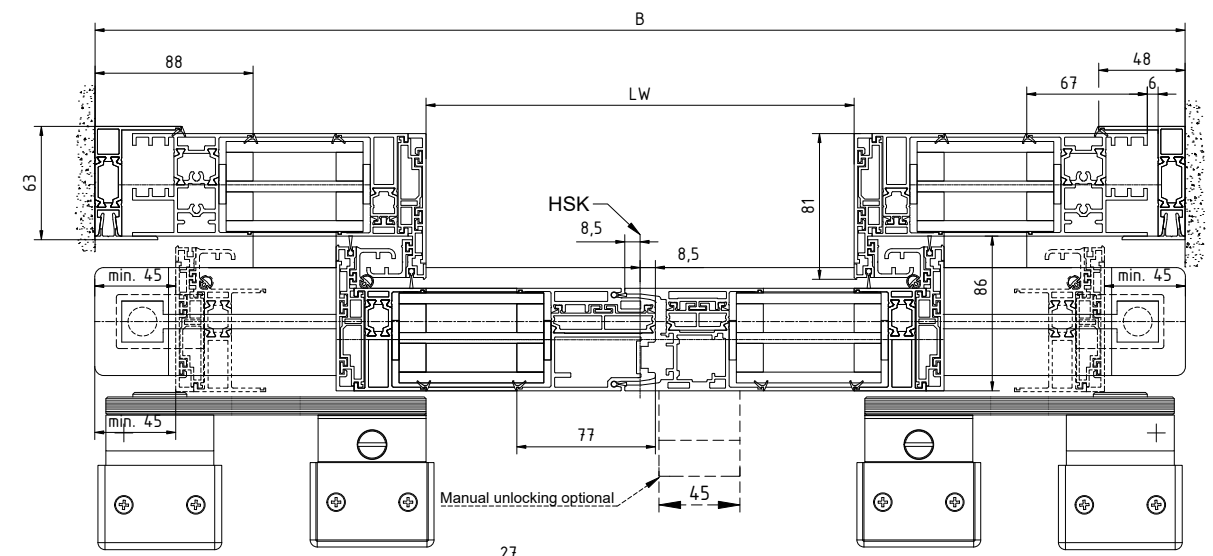
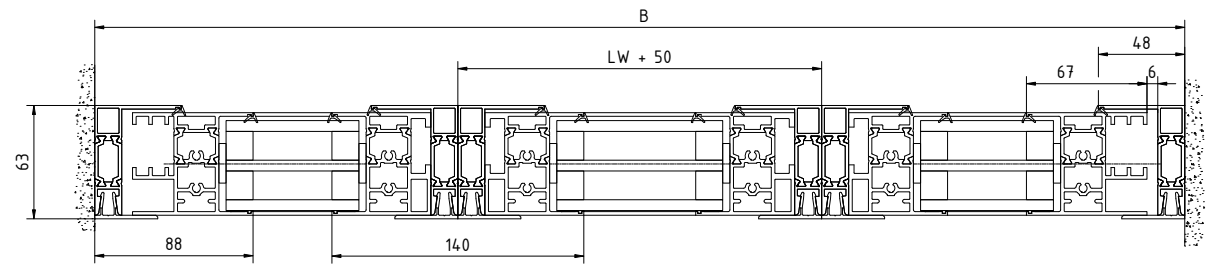
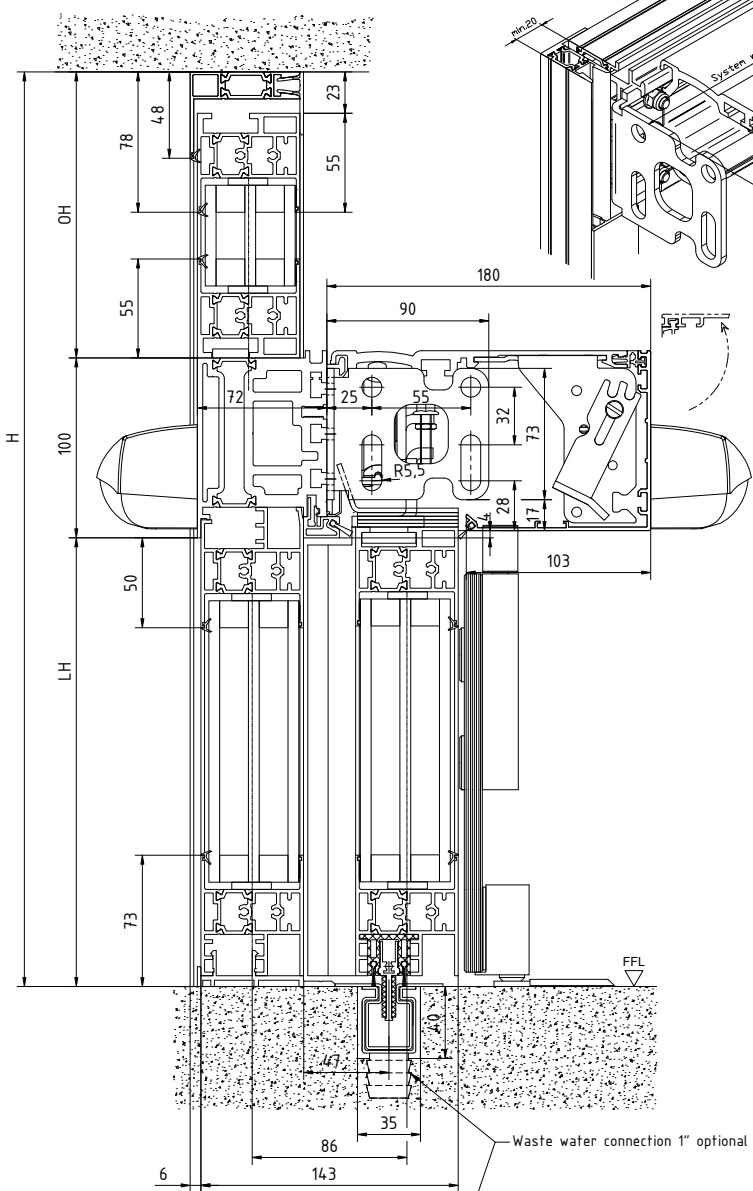
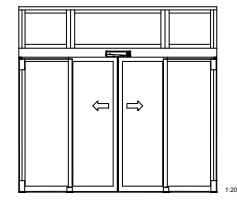
Manual unlocking  
Usable European profile cylinder  
(European profile cylinder 17 mm) 35 x 70mm according to DIN 18252 P2BZ  
(Half cylinder European profile 17 mm) 35 x 10 according to DIN 18252  
For operation from the inside  
KABA star Round cylinder D=22, Typ 1515, 32,5 x 72,5mm,  
Execution AW2 according to EN 1303  
Half round cylinder 32,5/10 (CH)  
For operation from the inside

1:1	ES PROLINE	257832-00-6-60
	with fixed part - recessed floor rail	

2009/01/01  
 2010/01/01  
 2011/01/01  
 2012/01/01  
 2013/01/01  
 2014/01/01  
 2015/01/01  
 2016/01/01  
 2017/01/01  
 2018/01/01  
 2019/01/01  
 2020/01/01  
 2021/01/01  
 2022/01/01  
 2023/01/01  
 2024/01/01  
 2025/01/01  
 2026/01/01  
 2027/01/01  
 2028/01/01  
 2029/01/01  
 2030/01/01



F	Finished floor level	Pro Green ES 400 PRO	Weight
LW	Passage width	1-leaf	1-leaf
LH	Clearance height	LW 800 - 3000	ES 400 PRO 1 x 250 kg
H	Installation height	B min. = 2 x LW + 233 (with fixed part / with post width 121mm)	
X	Noticed		
According to EN 16005 / DIN 18650 Construction and testing principles for automatic: For doors, this dimension may only be 4 - 8 mm.			
		2-leaf	2-leaf
		LW 1000 - 3000	ES 400 PRO 2 x 200 kg
		B min. = 2 x LW + 207 (with fixed part / without post width)	

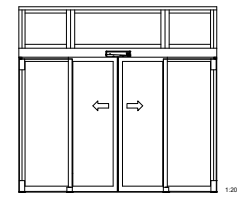
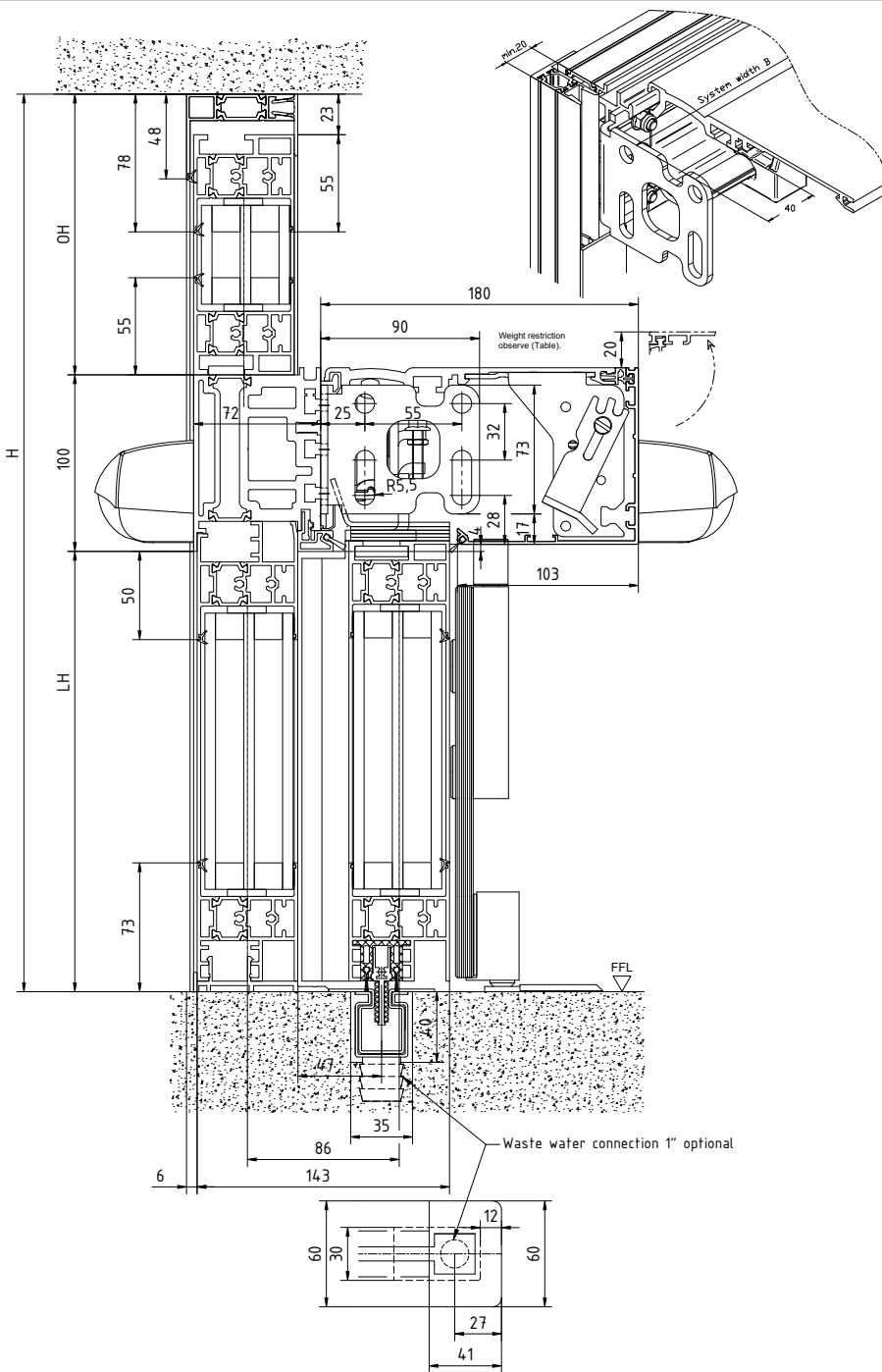


Make sure the screws are secure!  
In the masonry with the in  
specified in the documentation  
anchors work.

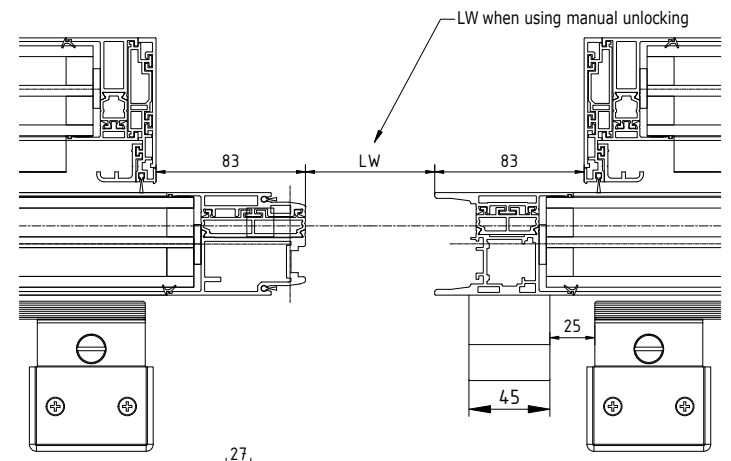
Attention!  
the safety equipment of the automatic door must  
correspond to the risk analysis according to DIN 18650

Manual unlocking Visible European profile cylinder (European profile cylinder 17 mm) 35 x 70mm according to DIN 18252 P2B2 (Half cylinder European profile 17 mm) 35 x 10 according to DIN 18252 For operation from the inside KABA star Round cylinder D=22, Typ 1515, 32.5 x 72.5mm, Execution AW2 according to EN 1303 Half round cylinder 32,5/10 (CH) For operation from the inside			
1	Date	Name	Version
2			
3			
4			
5			
ES PROFILE Siling door Pro Green RC2 / RC3			257832-00-6-60
1:1	Scale		
Drawing date: with fixed part: 08.10.2015; leaf: 08.10.2015			1
Copyright © 2015 by ES-Profile GmbH, Germany			

© 2015 ES-Profile GmbH, Germany  
Alle Rechte vorbehalten. Nachdruck, Vervielfältigung und Verbreitung, auch auszugsweise, ist ohne schriftliche Genehmigung.  
ES-Profile GmbH, Germany  
www.es-profile.de



FFL	Finished floor level	Pro Green ES 400 PRO	Weight
LW	Passage width	1-leaf	1-leaf
LH	Clearance height	LW 800 - 3000	ES 400 PRO 1 x 250 kg
H	Installation height	B min. = 2 x LW + 233 (with fixed part / with post width 121mm)	
X	Noticed		
	According to EN 16005 / DIN 18650 Construction and testing principles for automatic: For doors, this dimension may only be 4 - 8 mm.	2-leaf LW 1000 - 3000 B min. = 2 x LW + 207 (with fixed part / without post width)	2-leaf ES 400 PRO 2 x 200 kg



Make sure the screws are secure!  
In the masonry with the in specified in the documentation anchors work.

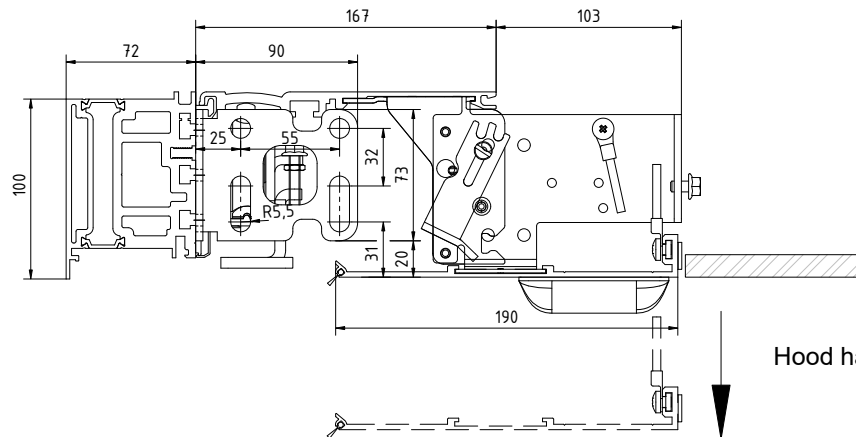
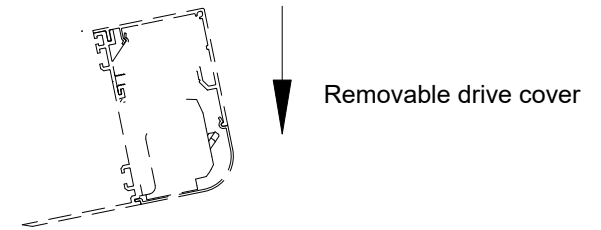
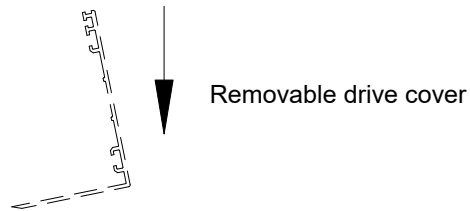
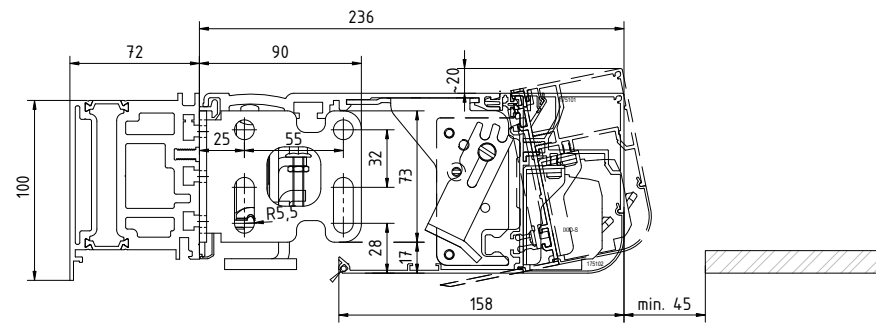
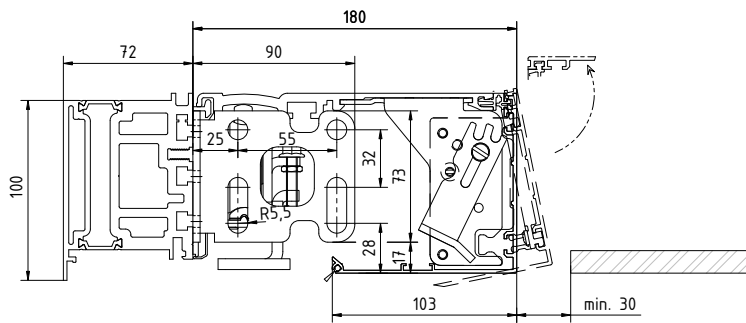
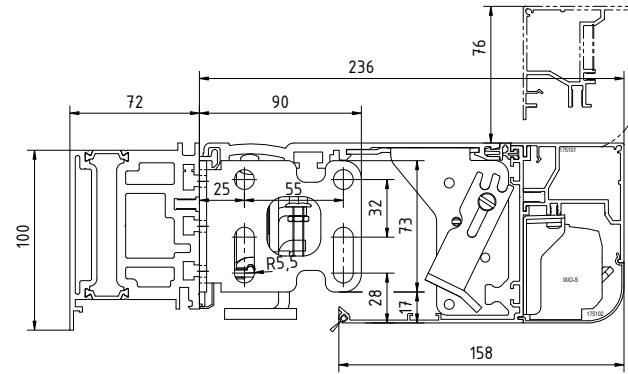
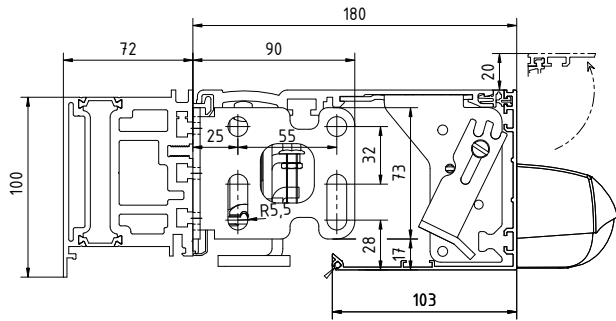
RC2 anti-burglary class door glazing: Insulating safety glass according to DIN EN 556 P5A  
RC3 anti-burglary class door glazing: Insulating safety glass according to DIN EN 556 P5A

Manual unlocking  
Usable: European profile cylinder (European profile cylinder 17 mm) 35 x 70mm according to DIN 18252 P2BZ (Half cylinder European profile 17 mm) 35 x 10 according to DIN 18252  
For operation from the inside  
KABA star Round cylinder D=22, Typ 1515, 32.5 x 72.5mm, Execution AW2 according to EN 1303  
Half round cylinder 32.5/10 (CH)  
For operation from the inside

Attention!  
the safety equipment of the automatic door must correspond to the risk analysis according to DIN 18650

1	ES PROLINE	257832-00-6-60	1
2	ES PROLINE	257832-00-6-60	1



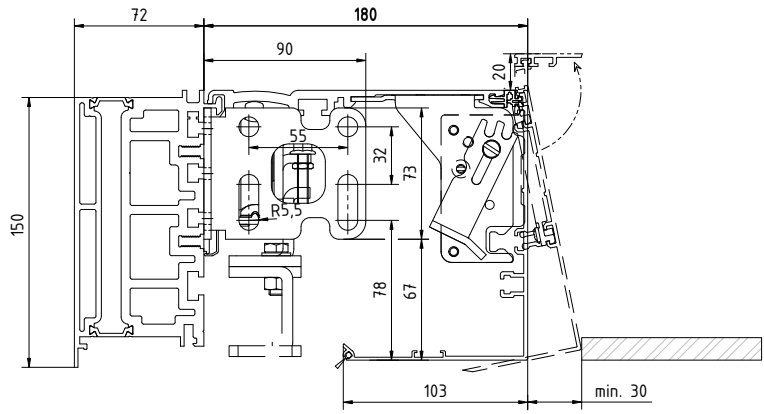
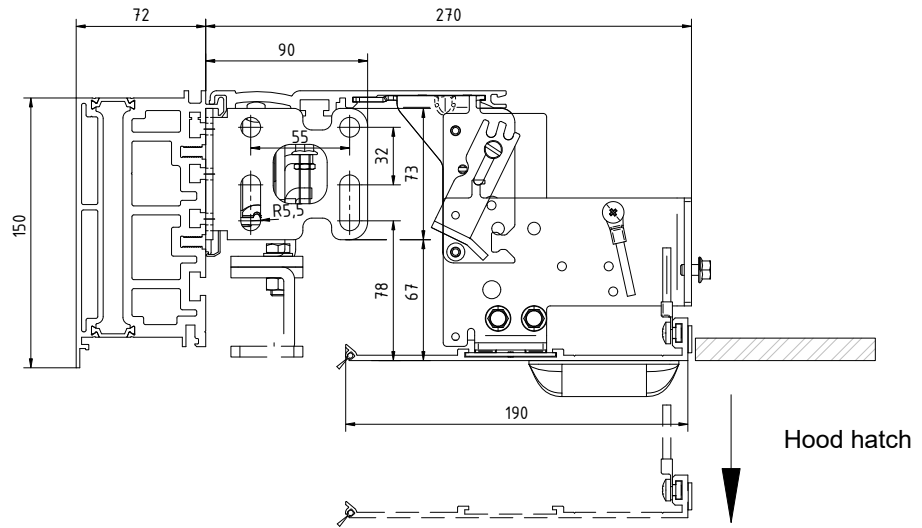
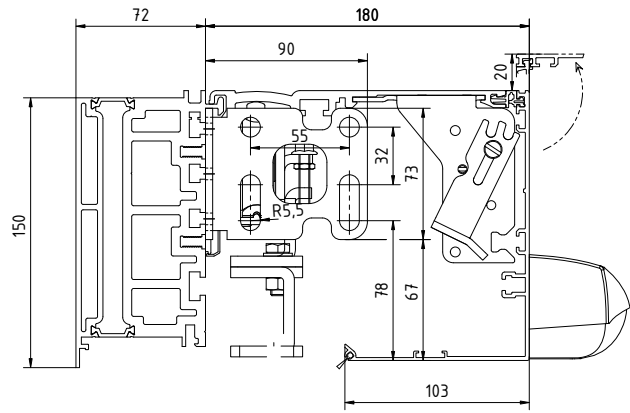


Hood hatch

Rev	Date	Name	Version
1	08/2011	AD	1
2			
3			

	ES PROLINE 257832-00-6-60 mechanical covers	257832-00-6-60 1 00
--	---	---------------------------



Removable drive cover

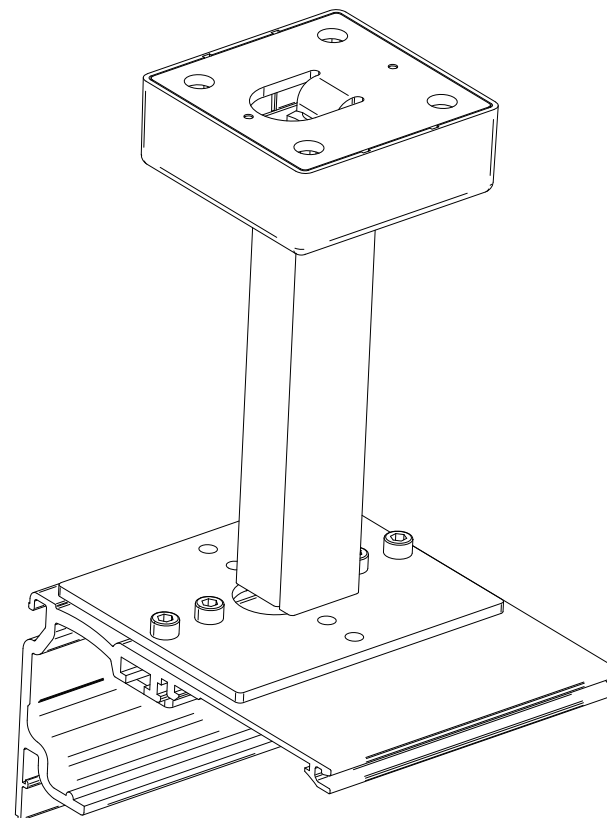
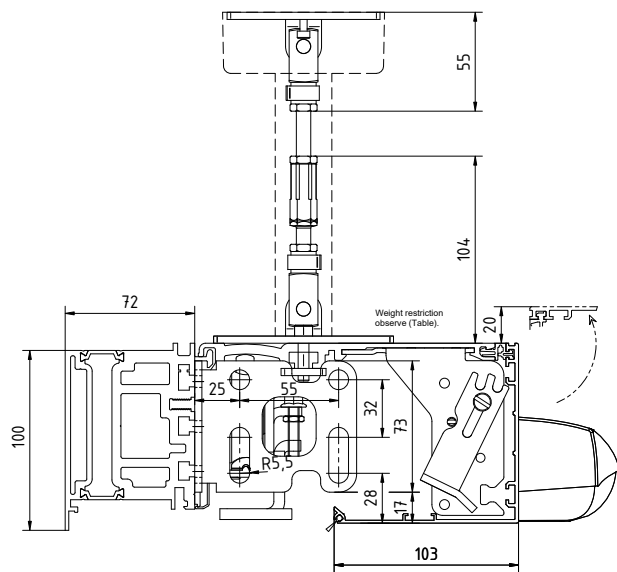
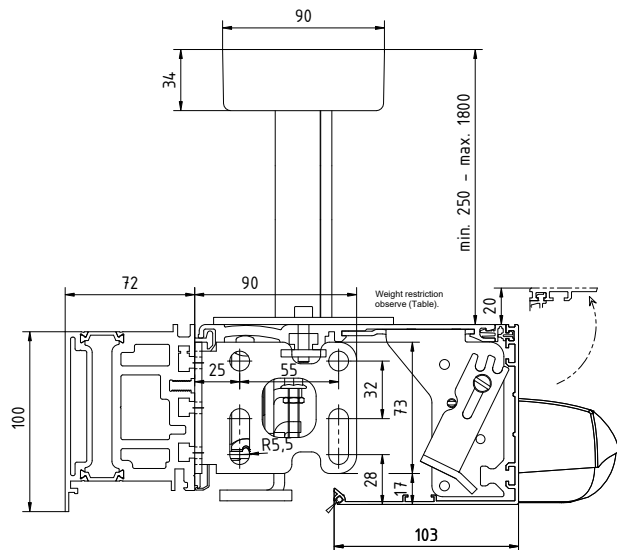
Rev.	Date	Name	Version
1	08/2011	AD	
2			
3			

ES PROLINE	257832-00-6-60	1
1:1	ES PROLINE	257832-00-6-60
	ES PROLINE	257832-00-6-60
	ES PROLINE	257832-00-6-60

© 2011 ES PROLINE. All rights reserved. ES PROLINE is a registered trademark of ES PROLINE. All other trademarks are the property of their respective owners.

Pro Green ES 400 PRO	Weight
1-leaf LW 800 - 3000 B min. = 2 x LW + 233 (with fixed part / with post width 121mm)	1-leaf ES 400 PRO 1 x 250 kg
2-leaf LW 1000 - 3000 B min. = 2 x LW + 207 (with fixed part / without post width)	2-leaf ES 400 PRO 2 x 200 kg



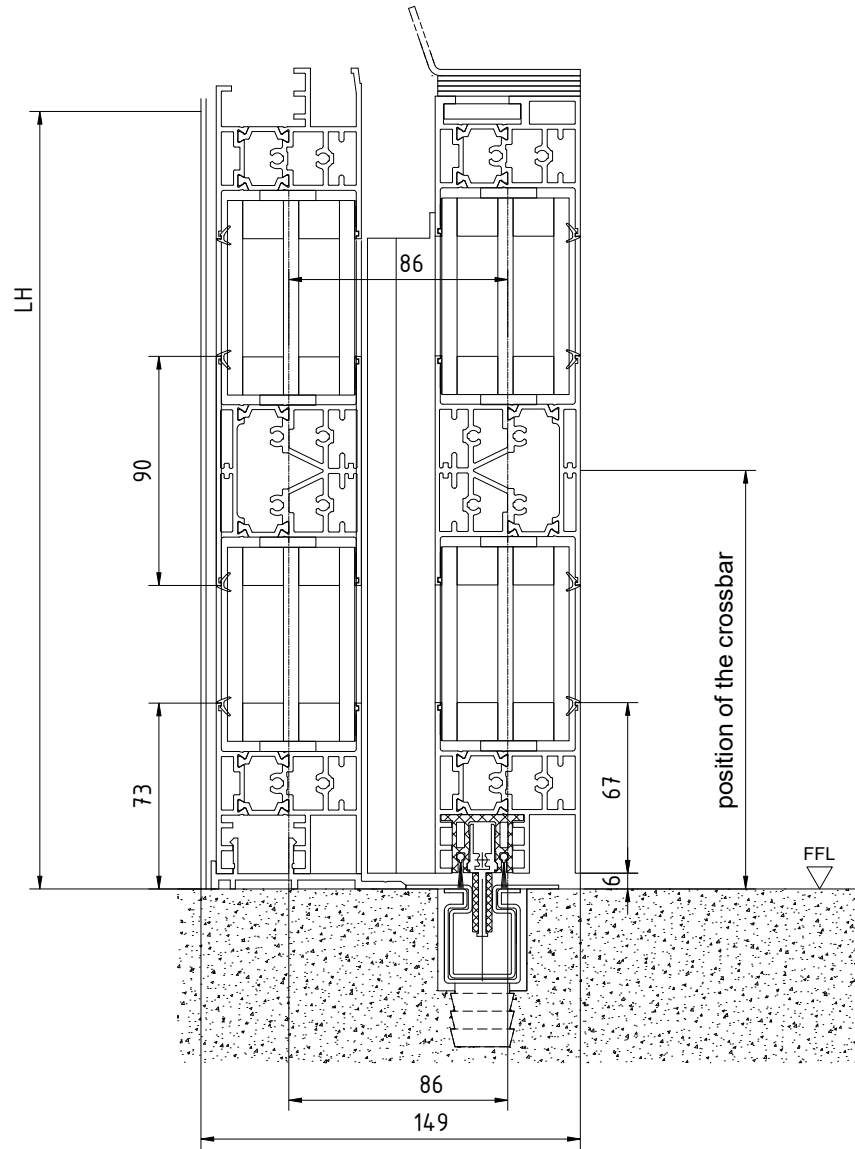
Make sure the screws are secure!  
In the masonry with the in-  
specified in the documentation  
anchors work.

RC2 anti-burglary class door glazing: Insulating safety glass  
according to DIN EN 356 P4A

RC3 anti-burglary class door glazing: Insulating safety glass  
according to DIN EN 356 P5A

Rev.	Date	Name	Version	Information
1	08.2011	Storck	01	Information
2				Revisions
3				Revisions
4				Revisions
5				Revisions
6				Revisions
7				Revisions
8				Revisions
9				Revisions
10				Revisions
11				Revisions
12				Revisions
13				Revisions
14				Revisions
15				Revisions
16				Revisions
17				Revisions
18				Revisions
19				Revisions
20				Revisions
21				Revisions
22				Revisions
23				Revisions
24				Revisions
25				Revisions
26				Revisions
27				Revisions
28				Revisions
29				Revisions
30				Revisions
31				Revisions
32				Revisions
33				Revisions
34				Revisions
35				Revisions
36				Revisions
37				Revisions
38				Revisions
39				Revisions
40				Revisions
41				Revisions
42				Revisions
43				Revisions
44				Revisions
45				Revisions
46				Revisions
47				Revisions
48				Revisions
49				Revisions
50				Revisions
51				Revisions
52				Revisions
53				Revisions
54				Revisions
55				Revisions
56				Revisions
57				Revisions
58				Revisions
59				Revisions
60				Revisions

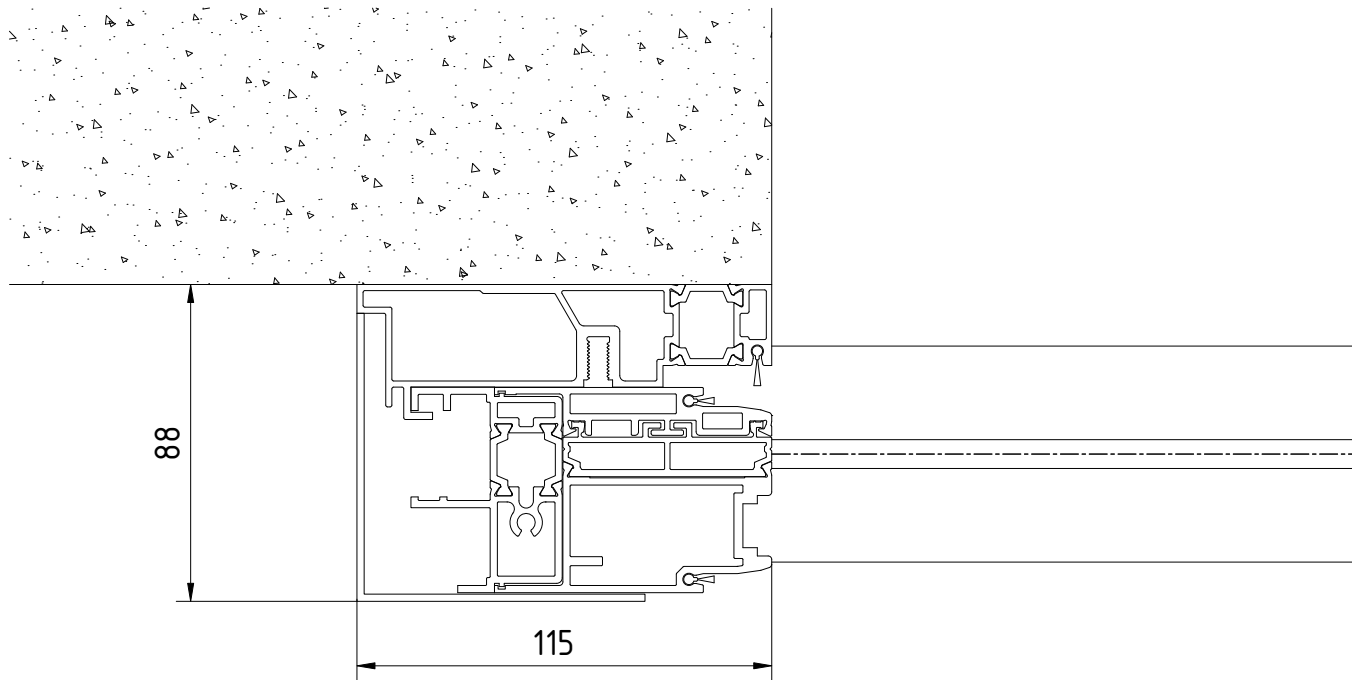
1:1 ES PROLINE  
257832-00-6-60  
Mechanism hanger



Technische Zeichnung  
 für den Einbau in die Wand  
 der Herstellerangaben sind zu beachten  
 alle Maße sind in mm angegeben  
 alle Rechte vorbehalten © 2023

3			Date	Name	Material	
2		Drawn	08.2023	Wenzel		
1		Tested				Issue: Format: <b>A1</b> Replacem.:
1		Drawn				Replacem.: 257632-00-6-60 Var.: 00
		Scale	ES PROLINE sliding door Pro Green RC2 / RC3		Examples:	1 1
		1:1	crossbar - insulating glass - with fixed part - recessed floor rail			





\*We will then use the reproduction of this document.  
 Use and communication of these contents is not permitted.  
 design for your preparation. All rights reserved. In the case  
 Subject to the granting of patents or registration of this model.

3				Date	Name	Material	© dormakaba GmbH+Co.KG (DE) Ennepetal				
2				Drawn	08.2023	Wenzel	Issue:				
1				Tested			Format: A2				
1	Change No.	Date	Name	Stand.			Replacem.:				
	12000000000000000000						Drawing-No	Var.	Typ	Cond	Sheet
		Scale	ES PROLINE								
		1:1	sliding door Pro Green RC2 / RC3				257632-00-6-60				
			receiving post - insulating glass - with fixed part - recessed floor rail				Var.: 00				
							1 von 01				

