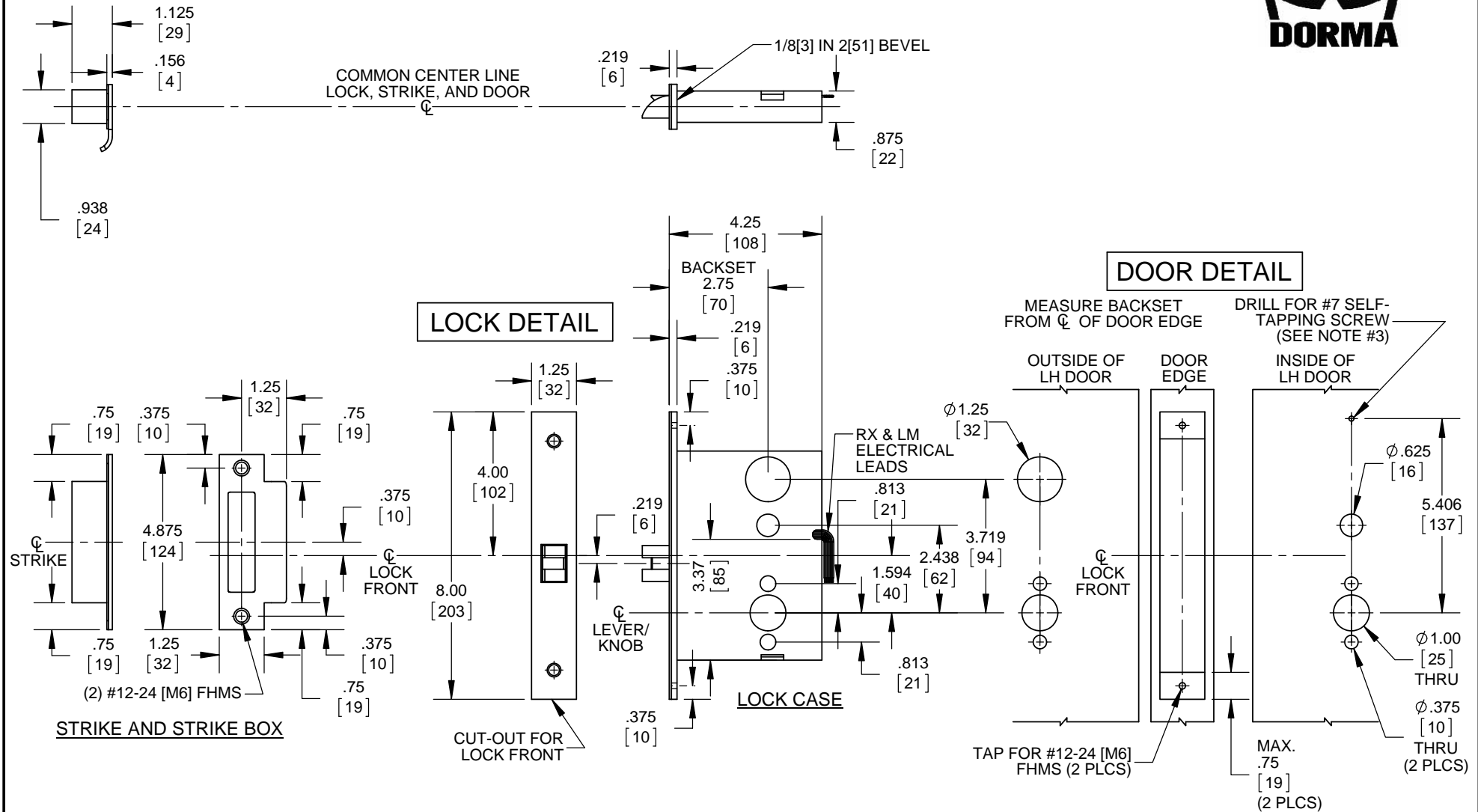


- NOTES:
1. DIMENSIONS ARE IN INCHES/[MM].
 2. DO NOT SCALE DRAWING.
 3. FOR TOP MOUNTING HOLE OF M ESCUTCHEON, USE TRIM TO LOCATE AND SECURE WITH SCREW PROVIDED. (FOR #7 FHWS, USE 3/32" DRILL)
 4. FOR #12 FHWS, USE 9/64" (.140") DRILL.
 5. FOR #12-24 FHWS, USE #16 (.177") DRILL & TAP.

DOOR CUT-OUTS AS INDICATED UNDER DOOR DETAIL.
FRAME FOR STRIKE SHOWN UNDER LOCK DETAIL.



NOTES:

1. DIMENSIONS ARE IN INCHES/[MM].
2. DO NOT SCALE DRAWING.
3. FOR TOP MOUNTING HOLE OF M ESCUTCHEON, USE TRIM TO LOCATE AND SECURE WITH SCREW PROVIDED. (FOR #7 FHWS, USE 3/32" DRILL)
4. FOR #12 FHWS, USE 9/64" (.140") DRILL.
5. FOR #12-24 FHMS, USE #16 (.177") DRILL & TAP.

DOOR CUT-OUTS AS INDICATED UNDER DOOR DETAIL.
FRAME FOR STRIKE SHOWN UNDER LOCK DETAIL.

STEEL DOORS - A&B Rose Trim, M Escutcheon Trim

M9053, M9056, M9053LM

DORMA USA, Inc.
Reamstown, PA 17567

Toll-Free: (800) 523-8483
Facsimile: (800) 274-9724

Always consult DORMA's web site for latest template at www.dorma.com.