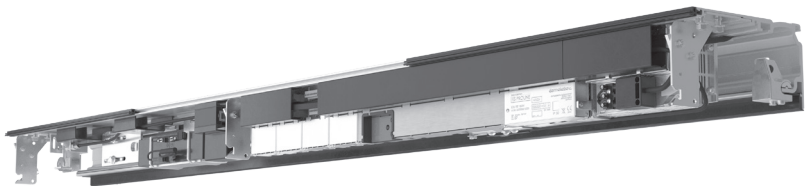


ES 250 PRO/ES 250 PRO FST ES 400 PRO/ES 400 PRO FST

Operation manual
Original document



059688-45532/17050 – 07/2023

EN

Contents

1	About this document	3
1.1	Contents and purpose	3
1.2	Target group	3
1.3	Other applicable documents	3
1.4	Documents storage	3
1.5	Symbols used	3
1.5.1	Hazard categories	3
2	Safety	4
2.1	Reasonably foreseeable misuse	4
2.2	General safety instructions	4
2.3	Danger points	4
3	Operation	5
3.1	Switching on the door unit	5
3.2	Changing the operating mode	5
3.3	Setting the partial opening width	6
3.3.1	Setting the partial opening width using the operating mode switch	6
3.4	Releasing the door manually	6
3.5	Opening/closing the door in the event of power failure	7
3.5.1	Door unit with battery pack	7
3.5.2	Door unit without battery pack	7
3.6	Commissioning the door after a power failure	7
3.7	Switching off the door	7
3.8	Fault LED on the operating mode switch	7
4	Cleaning	8
5	Troubleshooting	8
5.1	Error location	8

1 About this document

1.1 Contents and purpose

This manual enables the safe operation of the ES PROLINE sliding door unit (also referred to as "door unit" in the following). This manual constitutes a component of the product and must be stored in the immediate vicinity of the product so that it is accessible to personnel at all times. The facility operator must have read this manual prior to commissioning. Complying with all safety instructions and action steps provided in this manual is the basic prerequisite for handling the door unit safely.

1.2 Target group

This manual is aimed at the facility operator and the user of the ES PROLINE sliding door unit. The user must be instructed by the facility operator in the safe handling of the door unit.

1.3 Other applicable documents

- Documentation for accessories used

1.4 Documents storage

This manual and the applicable documents must be kept during the service life of the product and must be passed on with the product.

1.5 Symbols used

1.5.1 Hazard categories



WARNING

This signal word indicates a possible hazardous situation that may result in death or serious injury if not averted.



CAUTION

This signal word indicates a possible hazardous situation that may result in minor or slight injury if not averted.



ATTENTION

This signal word indicates a possible hazardous situation that may result in damage to property or the environment if not averted.

2 Safety

2.1 Reasonably foreseeable misuse

Any use above and beyond the correct use is considered to be incorrect use.

2.2 General safety instructions



WARNING

Danger to life through electric current

Danger of electric shock.

Never insert metal objects into the openings on the operator.

Do not allow any water or other fluids to get into the operator.

2.3 Danger points

Depending on the structural condition, door variant and protection option, residual risks exist at the closing edges, e.g. due to slight crushing or force limited impacts.

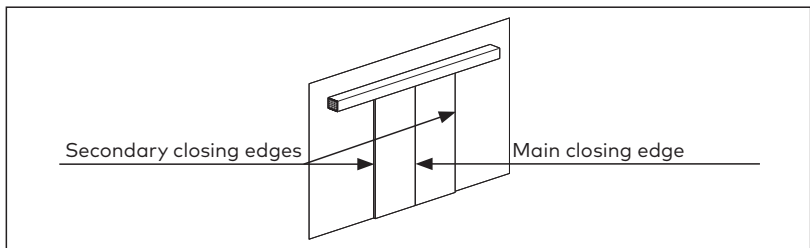


Fig. 1

3 Operation

3.1 Switching on the door unit

1. If the optional emergency stop switch or emergency open switch is locked (button is pushed in), turn the button to release the switch.
2. Set the required operating mode using the operating mode switch (see the manual for the operating mode switch).

The following operating modes can be set with the operating mode switch.



Off operating mode

The door cannot be opened automatically.



Automatic operating mode

The door opens and closes automatically.



Permanent open operating mode

The door opens automatically and remains open while this operating mode is active.



Exit operating mode

The door opens and closes automatically when someone approaches from the inside. The door cannot be opened from the outside.



Partial open operating mode

The door opens automatically to the set partial opening width and closes automatically.

3.2 Changing the operating mode

1. Set the required operating mode using the operating mode switch (see the manual for the operating mode switch).

3.3 Setting the partial opening width



WARNING

Danger to life due to too small escape route

Danger at escape route sliding doors due to too small escape route.

- Adjust the partial opening width so that the required escape route width is not restricted.
-

The partial opening width can be set using the operating mode switch or via the web application. The option to set using the operating mode switch can be disabled in the web application.

3.3.1 Setting the partial opening width using the operating mode switch

1. Set the Off operating mode.
 - ▶ The door closes.
2. Set the Permanent open operating mode.
 - ▶ The door opens slowly.
3. When the required partial opening width is reached, set the Partial open operating mode.
 - ▶ The door stops.
 - ▶ The partial opening width is saved.
 - ▶ The door closes.

3.4 Releasing the door manually

If a manual release is installed, the door can be released manually. To release the door manually, either pull the handle bar or push the button depending on the type of manual release.

3.5 Opening/closing the door in the event of power failure

3.5.1 Door unit with battery pack

Depending on the battery mode setting, the door opens or closes in the event of a power failure.

The door can be opened/closed via the Night/Bank button.

3.5.2 Door unit without battery pack

The door unit is closed as follows, depending on the locking device type installed:

Standard or fail-safe locking device

1. Close the door unit manually.
 - ▶ The door unit cannot be locked.

Locking device type Fail-secure locking device

The door unit can only be closed if the door unit is released with an optional manual release (see 3.4).

3.6 Commissioning the door after a power failure

After a short wait, the door unit resumes operation in the previously activated operating mode.

3.7 Switching off the door

1. Set the Off operating mode using the operating mode switch (see the manual for the operating mode switch).
 - ▶ The door closes.
 - ▶ If the door unit has an automatic locking device, the door unit is locked.
 - ▶ The door can be opened with a night/bank activator.

3.8 Fault LED on the operating mode switch

The fault LED lights up if an error occurs that impairs operation. The door remains in the open position. The door can be closed by setting the Off operating mode so long as the displayed error does not prevent this.

- ▶ The door closes slowly.
- ▶ If a locking device is present, the door unit is locked.

4 Cleaning



WARNING

Danger to life through electric current

Danger of electric shock.

- Never insert metal objects into the openings on the operator.
- Do not allow any water or other fluids to get into the operator.



CAUTION

Danger of injury from moving parts

Risk of impact and crushing by the door leaves.

- Before commencing cleaning, switch the operating mode switch to Off or Permanently open operating mode and ensure this state for the duration of the cleaning work.



ATTENTION

Risk of damage to the surface

- Do not use any objects with sharp edges or any aggressive cleaning agents.

- The sensors, the floor guide and area of movement must be kept free from contamination at all times.
- For units with an underfloor guide, the floor track must be cleaned on a regular basis.
- Clean the door unit with a damp cloth and commercial cleaners.
To prevent any surface damage, do not use any abrasives.

5 Troubleshooting

5.1 Error location

If faults occur during operation, check the following:

- Is the power supply available?
- Is the optional emergency stop button released?
- Is the optional emergency open button released?
- Is the operating mode switch in the correct position?
- Are objects blocking the door?

If these items are all OK and the door unit is still not functioning, notify the facility operator.

Copyright © dormakaba 2023



www.dormakaba.com

dormakaba Deutschland GmbH
DORMA Platz 1
58256 Ennepetal
Germany
+49 2333 793-0

www.dormakaba.com