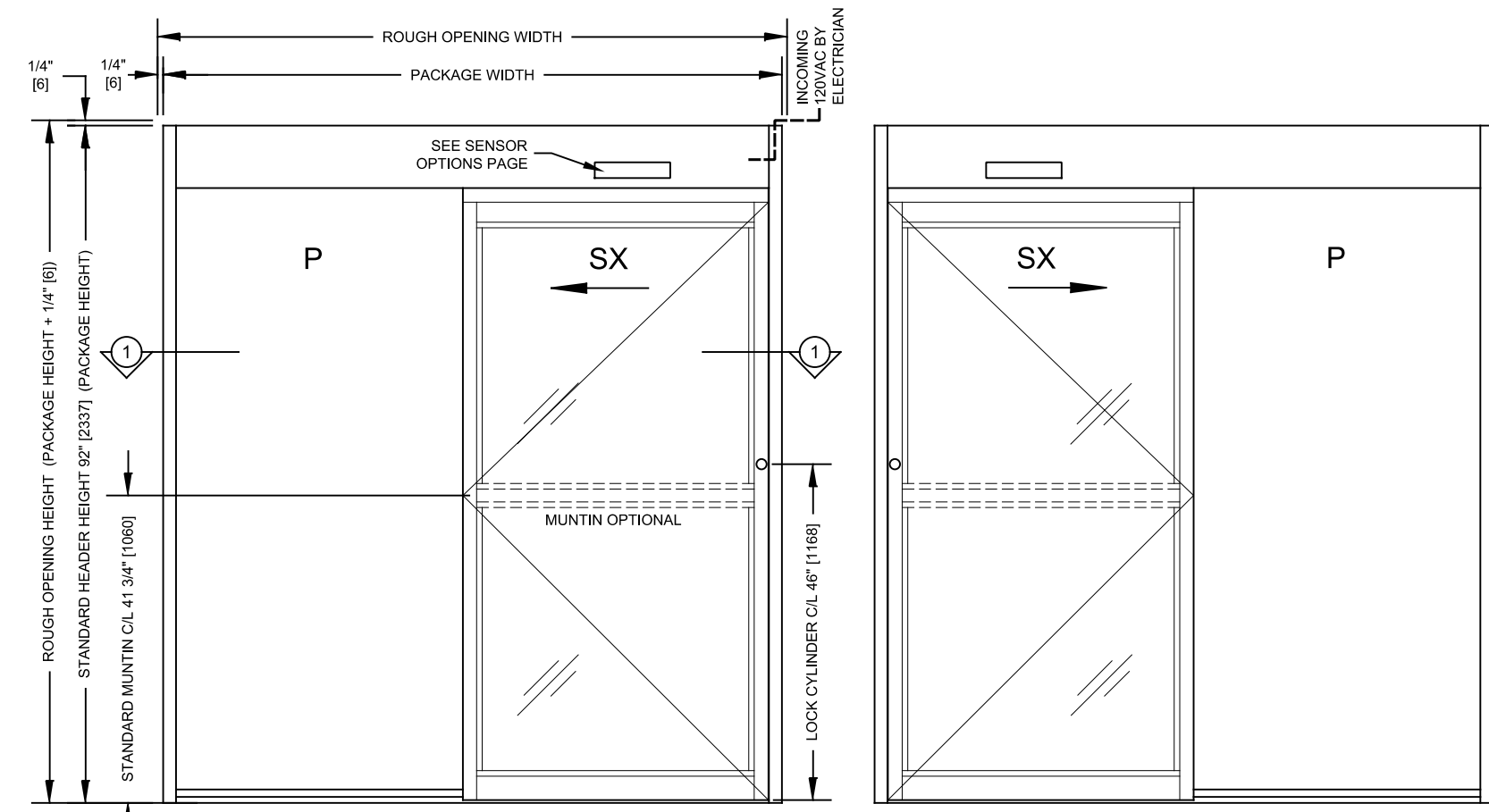
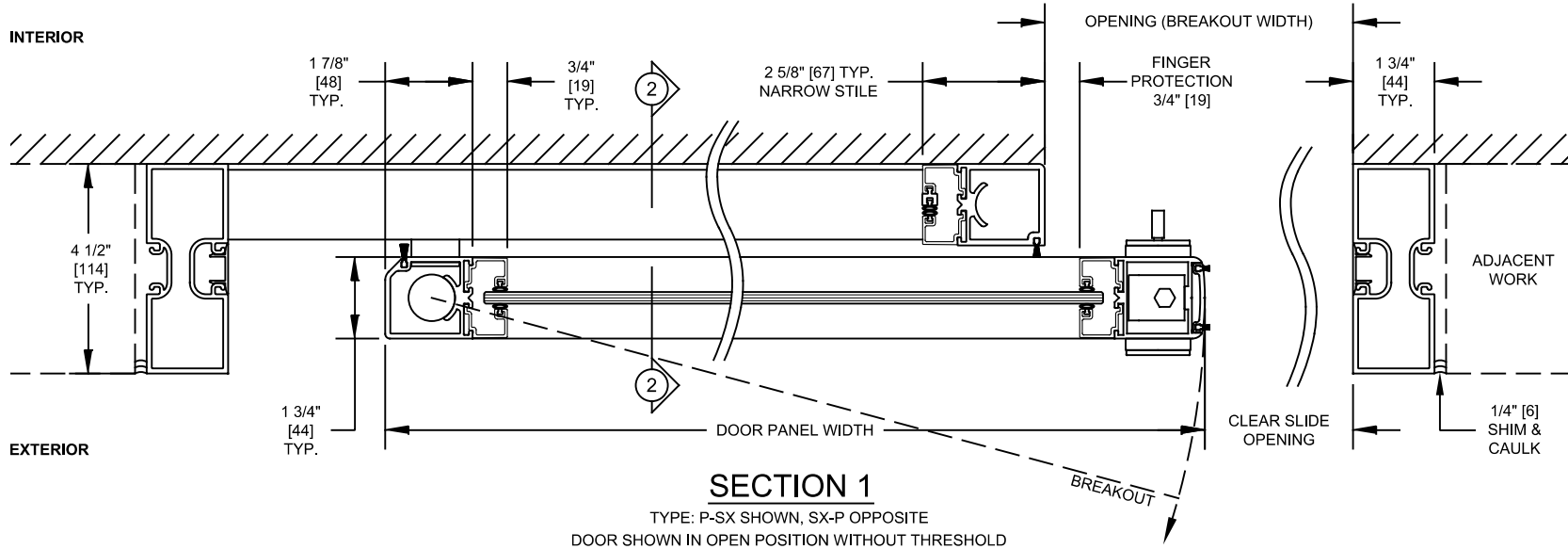


SECTION 2
TYPE: P-SX, SX-P



EXTERIOR ELEVATION
TYPE: P-SX, SX-P



SECTION 1
TYPE: P-SX SHOWN, SX-P OPPOSITE
DOOR SHOWN IN OPEN POSITION WITHOUT THRESHOLD

Package Width	Rough Opening Width	Clear Slide Opening	Door Panel Width	Breakout Width
(6'-6") 78" [1981]	78 1/2" [1994]	32 7/16" [824]	38 1/2" [977]	36 1/16" [916]
(7'-0") 84" [2134]	84 1/2" [2146]	35 7/16" [900]	41 1/2" [1054]	39 1/16" [992]
(8'-0") 96" [2438]	96 1/2" [2451]	41 7/16" [1053]	47 1/2" [1207]	45 1/16" [1145]
(9'-0") 108" [2743]	108 1/2" [2756]	47 7/16" [1205]	53 1/2" [1359]	51 1/16" [1297]
Width Formulas	Package Width + 1/2" [13]	(Package Width / 2) - 6 9/16" [167]	(Package Width / 2) - 1/2" [13]	(Package Width / 2) - 2 15/16" [74]

- This Standard Surface Applied Single door package consists of:
 - Operator:
 - Two combination motion/presence sensors (one on each side) (See sensor options page).
 - ESA II motor drive unit with self-learning and self-monitoring microprocessor controller.
 - Jamb mounted 5 function rocker switch panel (see mode switch options page).
 - Panels:
 - 2 5/8" [67] Narrow stile door panels (including 3/4" [19] wide glass stop).
 - 3-1/4" [83] Optional muntin mounted at 41-3/4" [1060] centerline on all panels (including 3/4" [19] wide glass stop).
 - 4" [102] Bottom rails (including 3/4" [19] wide glass stop).
 - 1 3/4" [44] x 4 1/2" [114] Double pocket jambs.
 - Vertical and horizontal brush type weather stripping (AAMA-701-11Class A).
 - Manual two point mortise lock with thumb turn and key cylinder.
 - 3/4" [19] wide snap-in glass stops for glazing from 1/4" [6] to 1 1/4" [32] thick at 1/8" [3] increments.
 - 3 1/4" [83] x 1/8" [3] Beveled ADA Compliant Threshold.
 - ITS Hydraulic self-closer in SX panels.
 - Breakaway sliding door panels (SX) and vertical pocket tubes (P).
 - Finishes:
 - Clear anodized (BHMA 204).
 - Dark Bronze anodized (BHMA 313).
- Typical Package Options:
 - Finishes: special anodized, PVDF (wet) paint, powder coat, and cladding available for header, panels and jambs.
 - Muntins: multiple muntins, various heights, locations and recessed exit device.
 - Bottom Rails: 7" [178], 10" [254]. Other options available.
 - Santoprene rubber weather stripping available.
 - Locking and Security Options:
 - Bi-stable autolock sliding carrier lock concealed in header.
 - 3-point lock and reinforced strike.
 - Security contacts.
 - Keyed mode switch panel (5 function or 3 function) (see mode switch options page).
 - Recessed exit device in 5 1/2" [140] in SX muntin.
 - Jambs: 1-3/4" [44] x 4-1/2" [114] pocketed and 2" [51] x 6" [152] smooth available.
- Dimensions:
 - Drawing dimensions are in English & Metric units. Metric units are displayed as: 1" [25] millimeters.
 - Typical Package Dimensions (Glass thickness may be limited by panel size):
 - Each door package is manufactured to your custom size requirements.
 - Package Width: Min. 6'-6" [1981] to Max. 9' [2743].
 - Header Height: Min. 7'-4 1/2" Max. 10' [3048].
 - SX Panel Weight: Max. Weight 200 lbs [90kg].
 - Maximum special application limits / custom packages: (Please contact dormakaba Architectural Services for dimensions outside of typical sizes above)
 - Package Width: Min. 6'-6" [1981] to Max. 9'-6" [2896].
 - Header Height: Max. 12' [3658].
 - SX Panel Width: Max. Width 56" [1422].
 - SX Panel Size Limit = (SX Panel Width x Weight) < 800 ft-lbs [1084 N-m] Max.
- Power Requirements:
 - 120V +/- 10%, 50/60 Hz, 6.6A peak, 250 W. Up to 4 operators on a single 20A breaker. Service to header by electrician.
- Standards of Compliance:
 - UL 325 & CSA 22.2 (listed with ETL).
 - Designed to comply with these standards depending on installation and application:
 - International Building Code (Section 1008).
 - ANSI/ BHMA 156.10.
 - ANSI/ BHMA 156.38.
 - NFPA 101 Life Safety Code (Section 7.2.1.9).
 - Refer to Local, State, National or AHJ. Building Code for minimum door height and minimum/maximum width allowable for egress requirements.
 - Minimum ADA is 32" clear slide opening.
- Contact dormakaba Architectural Services for more information:
 - Phone: 1-844-SPEC-NOW (1-844-773-2669)