

High security key switch

85-350130-NI & 7-350130-NI



Description:

High-security rotary cam key switch featuring a sophisticated multi-row pin tumbler cylinder mechanism. Suitable for heavy-duty industrial applications where secure control of switching is required.

Specification:

- 2 pole, 2 position changeover key switch with electrically isolated contacts (no links between terminals).
- 180 degree operating between 12 o'clock and 6 o'clock, both positions latched.
- Switch modules offer screw terminals as standard
- High security cylinder with Bayonet mounted switch allowing easier/separate wiring.

Cylinder Features:

The dormakaba quattro Plus cylinder range, with its patent protected reversible key, is designed for all applications where security, durability and strict factory key control are paramount

- Strong reversible nickel silver keys.
- dormakaba quattro Plus key blanks are protected by patent and are not available to the trade (K58 Systems)
- 4 radially arranged pin rows on up to 22 tumbler pin pairs on up to 44 possible positions - allowing more than 2 trillion possible keyings.
- European patent protection until 2033 (K85 Systems)
- High security key registration.
- 12 multi coloured key clips available for easy identification.

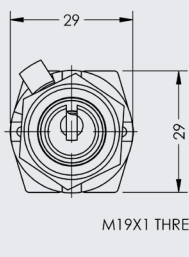
dormakaba key switches are ideal in the following areas:

- Control and Load Switches
- Changeover, Off/On and Spring Return - Control Switches
- Automation and control of machinery
- Industrial control panels
- Door barriers and gate control
- Shutter controls
- Multiple key entry options for OEM applications
- Lift and escalator controls
- Alarm set switch
- Desk and control panel switches for the Rail Industry

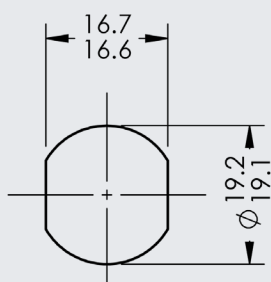
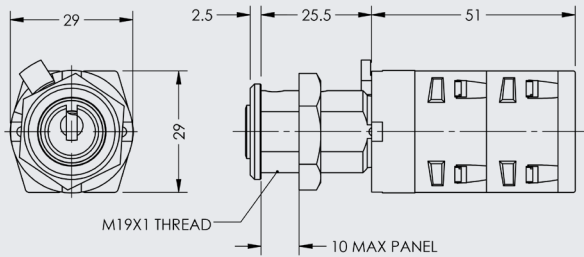
Item Codes:

85-350130-NI	quattro Plus (K85)	Active System
7-350130-NI	quattro Plus (K58)	O1 Legacy System

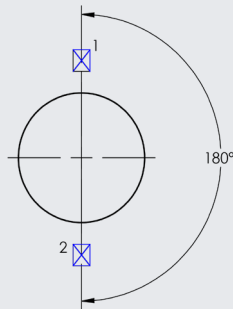
Key switch end view



Key switch side view



Panel Cutout



KID102- Key Entry / Withdrawal at position 1 180° movement to position 2, Stop, Key Entry / Withdrawal

Switch Specifications

Contact rating, resistive load	24V DC = 10A 12V DC = 10A 440V AC = 10A (0.65 pf)
Minimum Volts/amps	20V/5 mA
Contact Material	Silver (Gold optional)
Mechanical Service Life	< 1,000,000 operations
Operating temperature range	Min air temperature <ul style="list-style-type: none"> -25 °C = No excessive shock or vibration -5 °C = Normal use. Max air temperature. For 100% thermal rating <ul style="list-style-type: none"> +55 °C (average over 24 hrs with peaks up to 60 °C)
Depth behind panel	76.5mm
Terminal type	Screw

Datasheet: PDS-010-02

Any questions? We would be happy to advise you.

Contact us on: **01884 256464**