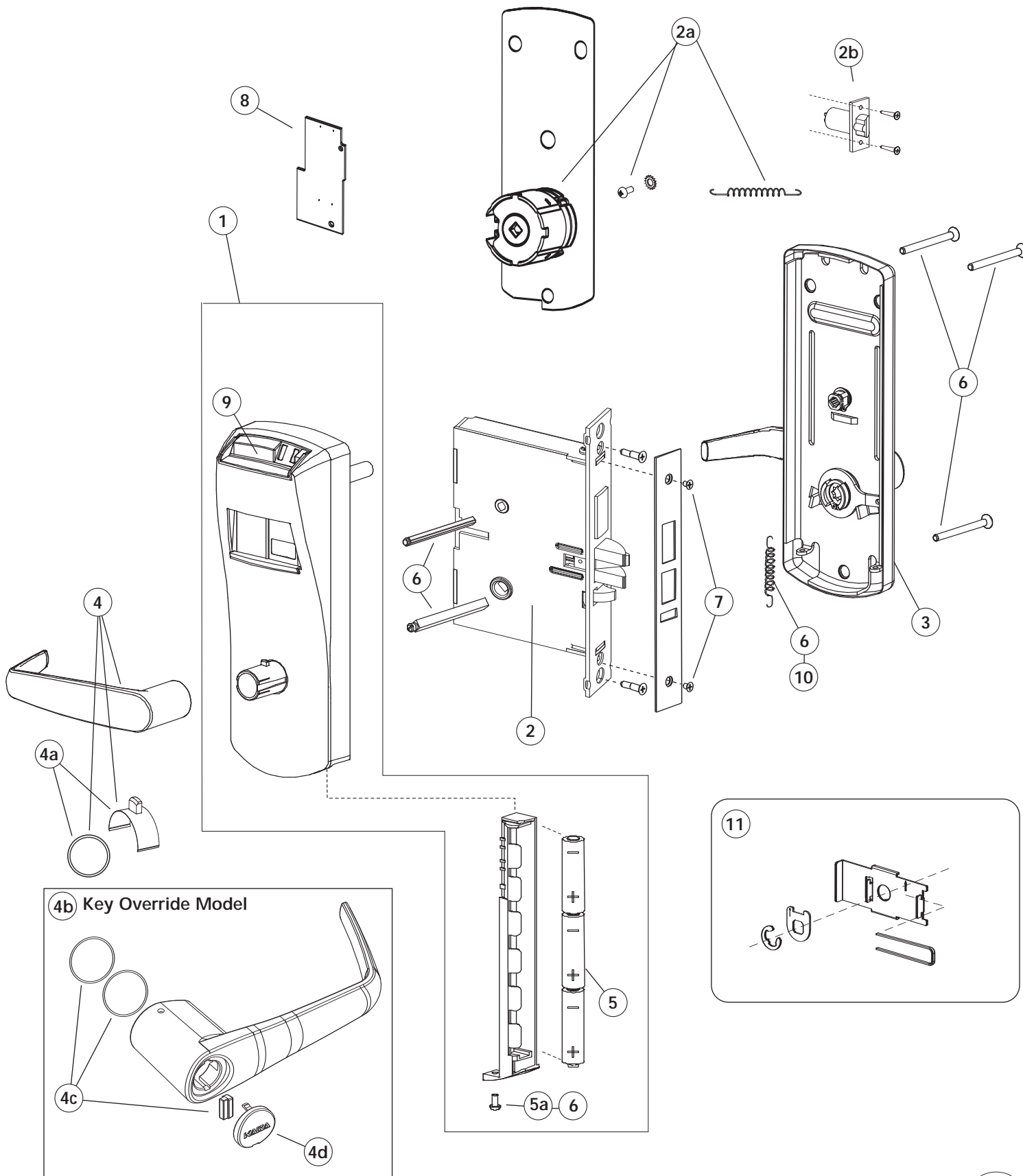


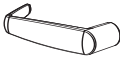

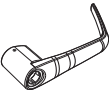




Lock Replacement Parts

Generation E-760 Series
ASM, ESM & Cylindrical



Lock Replacement Parts


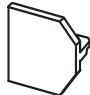
Generation E-760 Series

Item	Descriptions	Part#
4	Outside Lever  Long Short Includes: Lever, catch assembly and nylon bearing Replace XXX by desired finish.	062-510983-1XXX 062-510983-2XXX
4a	Catch Assembly and Nylon Bearing Pack (for electronic overrides) 	062-510510-K
4b	Outside Lever - Key-in-Knob Lori Override  Long Short Includes: Lever, nylon bearing, cylinder plug, spring washer, Kaba cap	062-510783-XXX 062-510908-XXX
4c	Cylinder Plug, nylon bearing & spring washer pack 	062-511446
4d	Cap (10/pack)  With Kaba Logo Without Kaba Logo	062-510804-2 062-510804-1
5	Battery Holder  Includes: (3) battery holder, screws, no batteries Batteries: 9 Alkaline AA batteries 12 Lithium AA batteries for freezing weather operation	118-509978-K 132-505601-K 132-510183-K
5a	Battery Holder Screw Pack  Indoor applications (Torx-head T-15) Outdoor applications (Spanner head) (Stainless steel security screw)	810-510086-K 810-510182-K
6	Hardware Bag (Screws and Spindles) Includes: Thumbturn (hex) spindle, Square spindle, Torx-head battery screw, compression spring (1) 1 lever extension spring, 3 mounting screws (10-24, 1/8" Hex head) Standard Door Thickness 1 3/8" - 2 1/2" (35 mm - 66 mm) Thick Door > 2 1/2" - 3 3/4" (67 mm - 95 mm) Replace XXX by desired finishes: Satin Brass (606), Satin Chrome (626).	062-510261-XXX 062-510189-xxxK
6a	Hardware Bag for System 700 Retrofit Includes: Thumbturn (hex) spindle, Compression spring (1), Short square half-spindle (with slotted end), Long square half-spindle (with tapered end), Torx-head screw, 3 mounting screws (10-24, 1/8" hex head), 1 extension spring Door Thickness 1 5/8" - 1 7/8" (41 mm - 48 mm) Spindle cut to length Door Thickness 1 3/8" - 2 1/2" (35 mm - 66 mm) Universal spindle uncut Door Thickness > 2 1/2" - 3 3/4" (67 mm - 95 mm) Universal spindle uncut	062-510262-XXX 062-510263-XXX 062-510264-XXX

Lock Replacement Parts

Generation E-760 Series



Item	Descriptions	Part#
7	Mortise or Latch Face Plate Screw Pack (10/pack) 2X1" (25 mm) Phillips screw per lock  Replace XXX by desired finish: Satin Brass (606), Satin Chrome (626).	062-508656-xxxK
	Strike Screw Pack (10/pack) - combination  Replace XXX by desired finish: Satin Brass (606), Satin Chrome (626).	062-504155-XXX
8	PCB Lock Controller Board E-760 E-760K	124-509958-001 124-509958-002T
9	Magnetic Stripe Card Reader Includes: gasket Track 1 Track 2 Track 3	118-510079-1 G 118-510079-2 G 118-510079-3 G
10	Lever Extension Spring Pack	012-510996-K
11	Auto Deadbolt / Office / Storeroom Kit To convert the standard Inside Trim Assembly to Autodeadbolt ASM, ASM Office or ASM/ESM Storeroom functions. Note: For locks built after August 2002	062-510484-K
	ASM Reverse Handing Tool For use when changing the handing of reversible ASM (2/pack) 	027-510382-K
	Outdoor Kit Includes: Gasket and Stainless Steel battery holder security screw	062-510180-K
	Spare Parts Boxes See Product Catalog M3032	