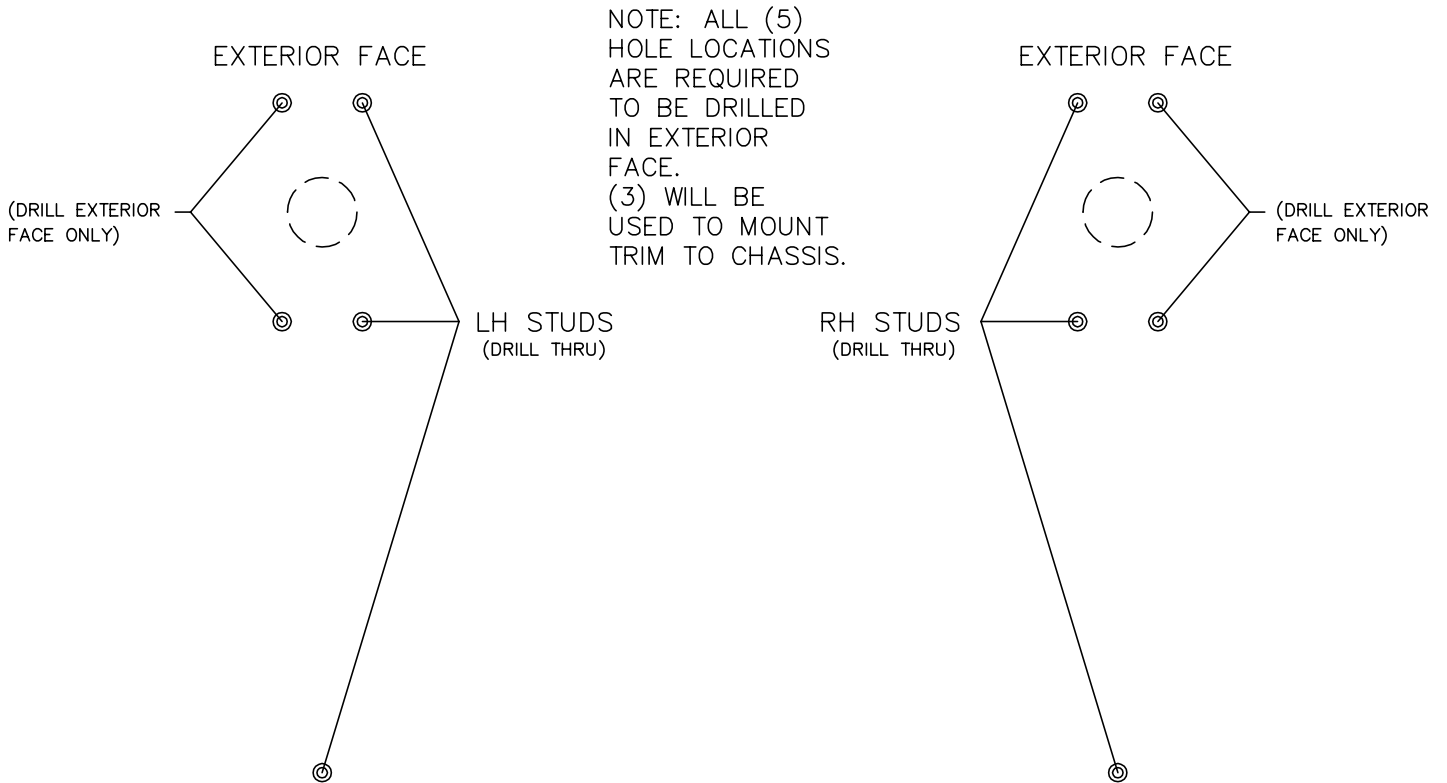
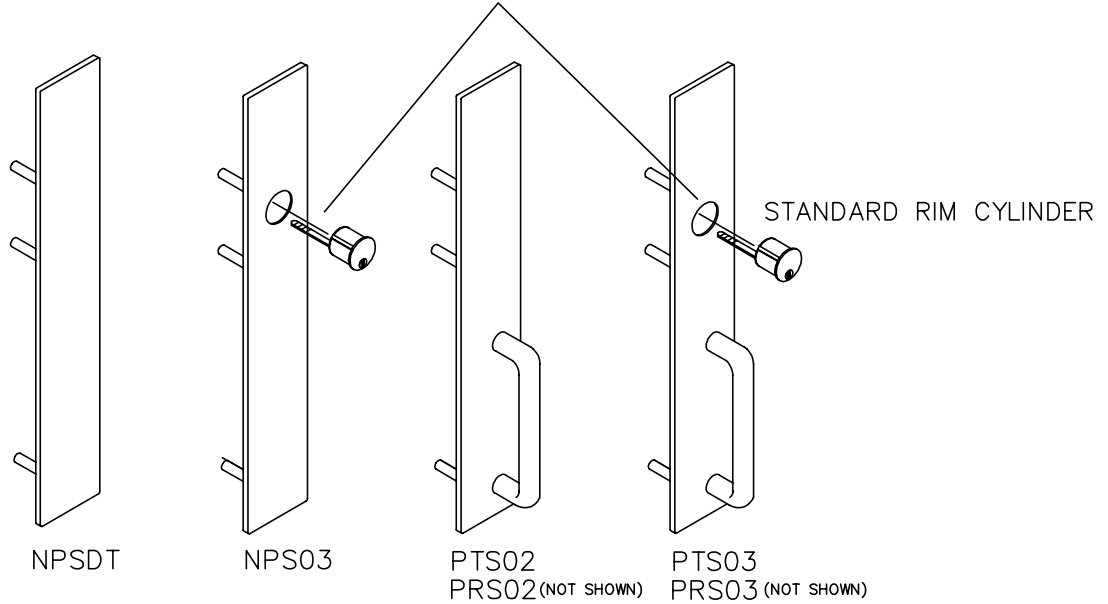


8000 SERIES PULL TRIM INSTRUCTIONS



CYLINDER SPECIFICATIONS AND INSTALLATION

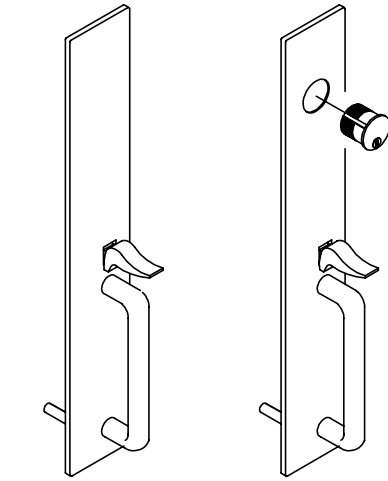
NOTE:
TAILPIECE WILL HAVE TO BE SHORTENED; 1/8" (3mm) - 3/16" (5mm) LESS THAN THICKNESS OF DOOR.





8000 SERIES TRIM HANDING INSTRUCTIONS

CYLINDER SPECIFICATIONS AND INSTALLATION

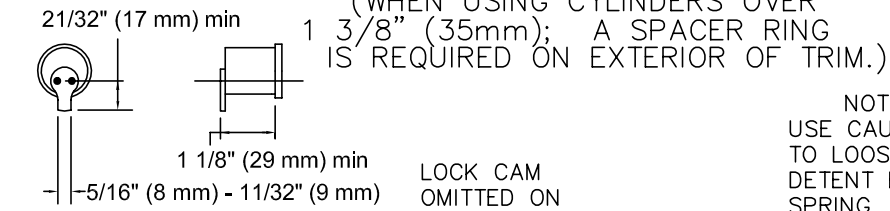


HTS22
HRS22 (NOT SHOWN)

HTS05
HRS05 (NOT SHOWN)

NOTE:
FOR HANDING OF CHASSIS ASSEMBLY (8400 SERIES ONLY) SEE DEVICE INSTRUCTIONS.

NOTE:
HANDING OF TRIM ONLY REQUIRED FOR 8400 SERIES.



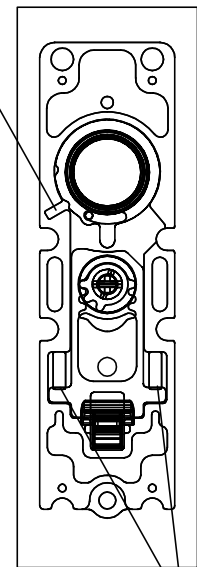
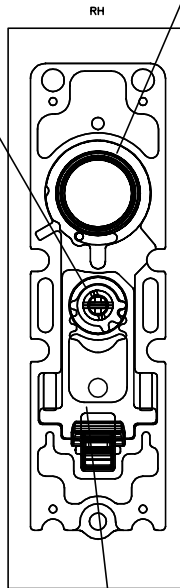
NOTE:
USE CAUTION NOT TO LOOSE SMALL DETENT BALL OR SPRING, WHEN CHANGING HANDS.

SPINDLE GEAR

DETENT BALL & SPRING

1. Remove backplate.
2. Carefully remove (2) slideplate springs.
3. Remove slideplate.
4. Rotate spindle gear as shown for opposite hand.
5. Re install slideplate as shown. Install slideplate springs at this time as well.
6. Re install back plate with (4) screws.
7. Drive small pin out inner spindle. Rotate inner spindle to allow cross hair to align both vertical and horizontal as shown. (The timing will be off if this is not done.) Drive small pin back through front hole of inner spindle.

BACKPLATE



SLIDEPLATE

SLIDEPLATE SPRINGS

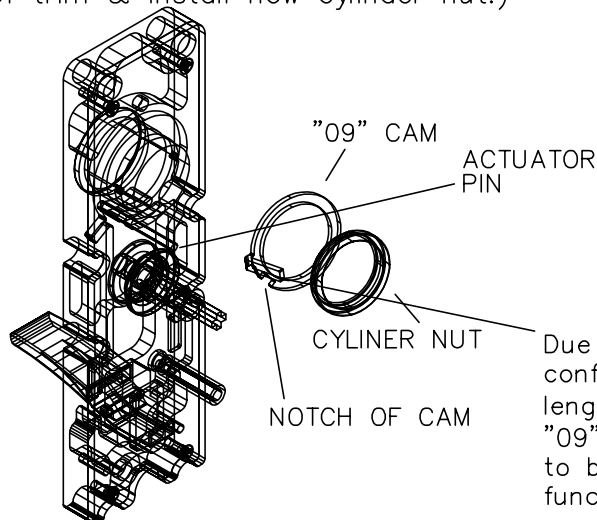
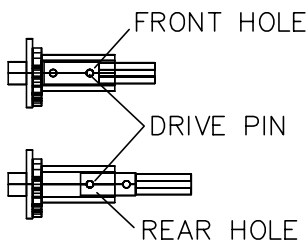
RH

LH

"06" FUNCTION

Insert mortise cylinder through trim, then install "09" cam as shown, (place notch in cam actuator pin on rear of trim & install new cylinder nut.)

NOTE: TRIM SHIPPED STANDARD FOR 1 3/4" THICK DOORS. FOR 2 - 2 1/4" THICK DOORS LENGTHEN INNER SPINDLE AS SHOWN. ON 2" THICK DOORS INNER SPINDLE WILL HAVE TO BE CUT DOWN 1/4".



Due to individual cam configurations & cylinder length's the leg of the "09" cam may have to be bent slightly to function properly.