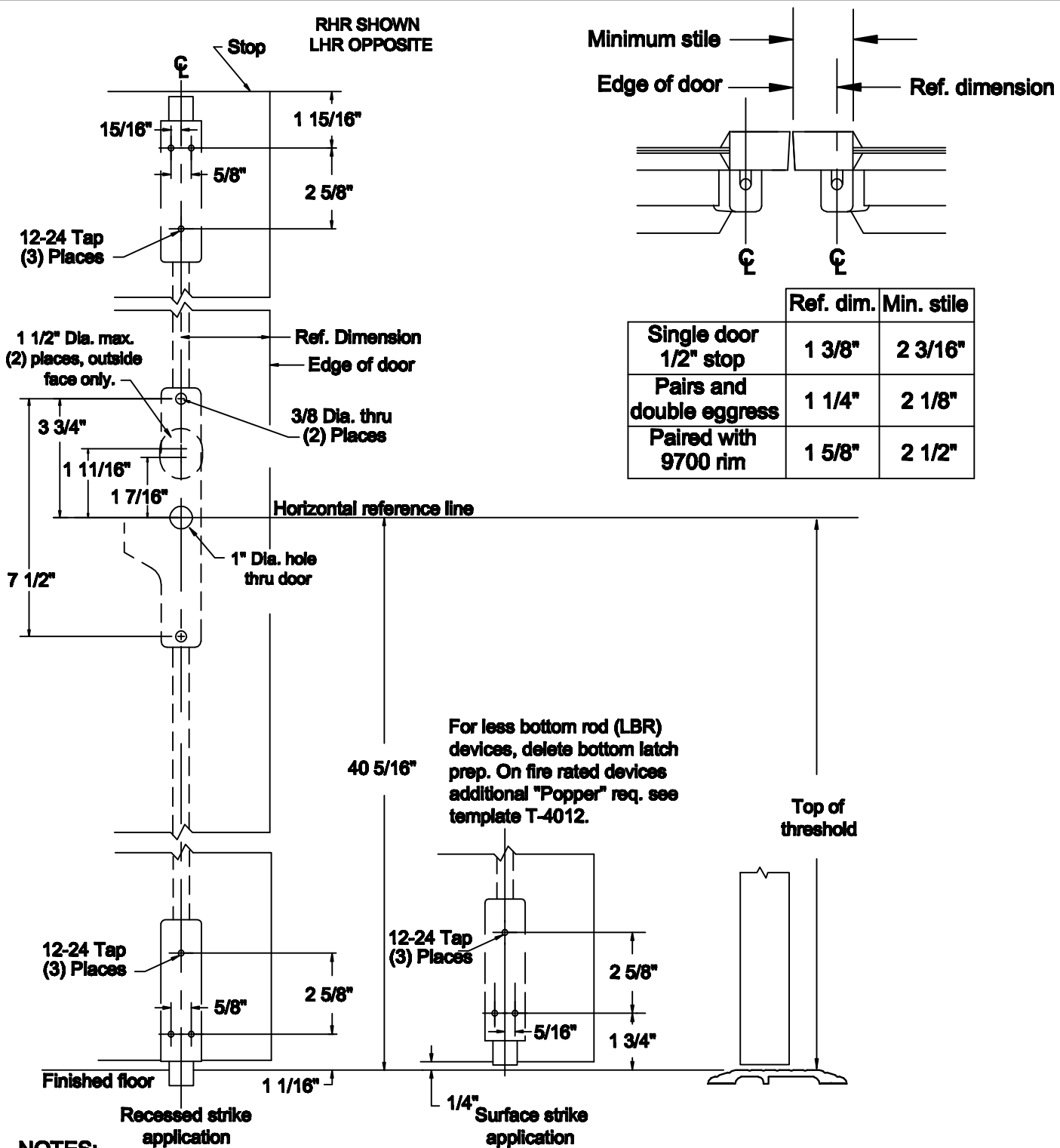


RHR SHOWN
LHR OPPOSITE



	Ref. dim.	Min. stile
Single door 1/2" stop	1 3/8"	2 3/16"
Pairs and double egress	1 1/4"	2 1/8"
Paired with 9700 rim	1 5/8"	2 1/2"

NOTES:

1. SEE MASTER SHEET #T-0001 FOR SUGGESTED DOOR REINFORCEMENT.
2. SEE ADDITIONAL TRIM TEMPLATE WHEN REQUIRED.
3. FOR LBR (LESS BOTTOM ROD) DEVICE, DELETE BOTTOM LATCH PREP.

REV. No. 0

REVISION:

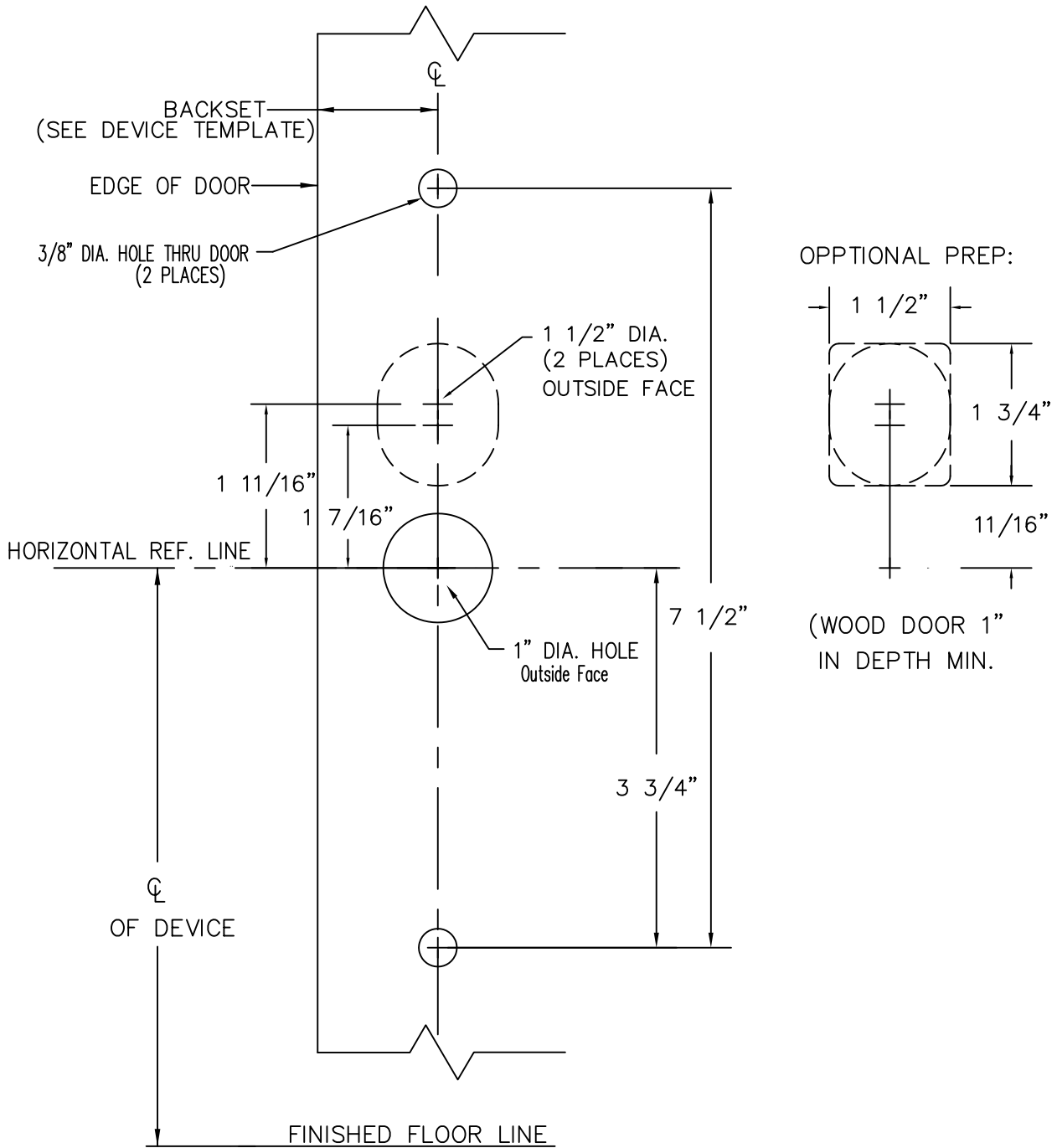
DATE: 2-12-2010



9800 & F9800 x 08,09,11 & 12 TRIMS
VERTICAL ROD TYPE EXIT DEVICE


TEMPLATE NUMBER
T-9805 ©

RHR SHOWN
LHR OPPOSITE



NOTES:

1. SEE MASTER SHEET #T-0001 FOR SUGGESTED DOOR REINFORCEMENT.

REV. No. 1	REVISION: Lever Style Notes	DATE: 1-22-2014
	<p>Z*08, Z*08C, Z*09, Z*09C, ZP11, ZP12 TRIM</p> <p>Note; * Denotes all Lever Design Styles</p>	<p>TEMPLATE NUMBER T-9034 ①</p>