

# Central Lock

## ZV.75-1-006



### Application:

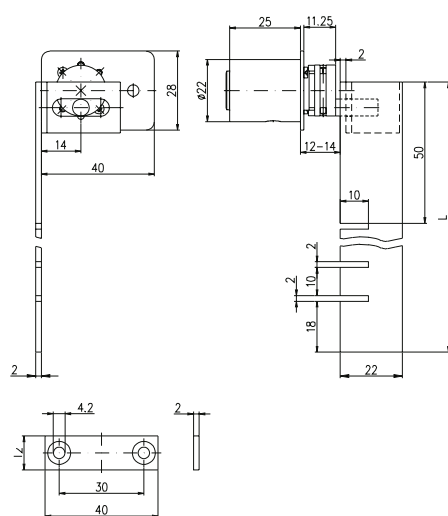
Locks several drawers simultaneously with one key. The desired locking position can be achieved by bending a sprocket of the central rod. All drawers are locked and unlocked with one complete key rotation (360°). This allows the key to be removed in the neutral position.

### Specification:

Housing supplied in solid natural brass with nickel plating  
Nickel-plated brass cylinder (type XIII, see page K.123)  
Bare iron lock and tabs  
Reversible key made from nickel silver

### Included with the cylinder:

2 reversible keys (See "Special Functions and Keys" for key options)  
Plastic key clip in dark red for Kaba penta, in dark blue for all other systems  
2 ea fastening screws (additional screws are available on request)  
Security Card for ownership registration and ordering duplicate keys  
Installation and Maintenance Instructions



<b>Premier Systems:</b>	6 Kaba penta	7 Kaba quattro pluS	12 Kaba gemini pluS
Patent expired systems	4 Kaba quattro S	2 Kaba gemini S	
Old systems	3 Kaba quattro <sup>1)</sup>	1 Kaba gemini <sup>1)</sup>	
Dealer systems	5 Kaba experT <sup>2)</sup>	19 Kaba maTriX <sup>2)</sup>	
Old dealer system		9 Kaba gemini T <sup>2)</sup>	

**Cylinder length** Standard 25mm, Cam pin length 8, 15, 37 and 40mm

**Lock rod lengths** 430, 550, 670 or 790mm

**Options** (See „Special Functions and Keys“ for details)

BAZ	Construction key	BAZ3	Construction key 3		
RE	Right side	LI	Left side		
430	Lock rod length 430mm	550	Lock rod length 550mm		
670	Lock rod length 670mm	790	Lock rod length 790mm		

Accessories- Order Code	Art.No.	Description
ZK-SCHRAUBE.M2,3X5,4	11403798	Fastening screws M2.3x4.5mm

### Standard Surface Finishes (for lock cylinder)

NI - Nickel plated	MS - Brass natural	
--------------------	--------------------	--

### Optional Surface Finishes

BH - brown light	MP - Brass polished	CR - Chrome standard
BM - brown medium	MSA - Brass antique	CRM - Chrom dull
BD - brown dark		CRP- Chrome polished
NIC - chemically nickel plated		
GO - gold plated		

### Order Code System

System Code.Lock.Type.Surface Finish.Rod length.Side.Option

Example:

6.ZV.75-1-006.NI.430.RE = penta.central lock. 75-1-006 .nickel plated.rod length 430mm. right side

**Please note that certain options, finishes and dimensions may be subject to extended factory lead times. Please contact our office via email on [sales.uk@kaba.com](mailto:sales.uk@kaba.com) or telephone (0) 870 000 5625.**

<sup>1)</sup> Kaba gemini and Kaba quattro are only offered for existing master key systems.

<sup>2)</sup> Kaba experT, Kaba maTriX and Kaba gemini T are only sold to authorized dealers.