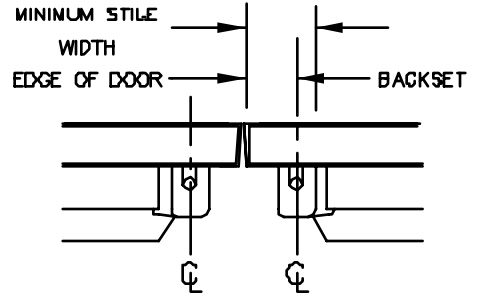
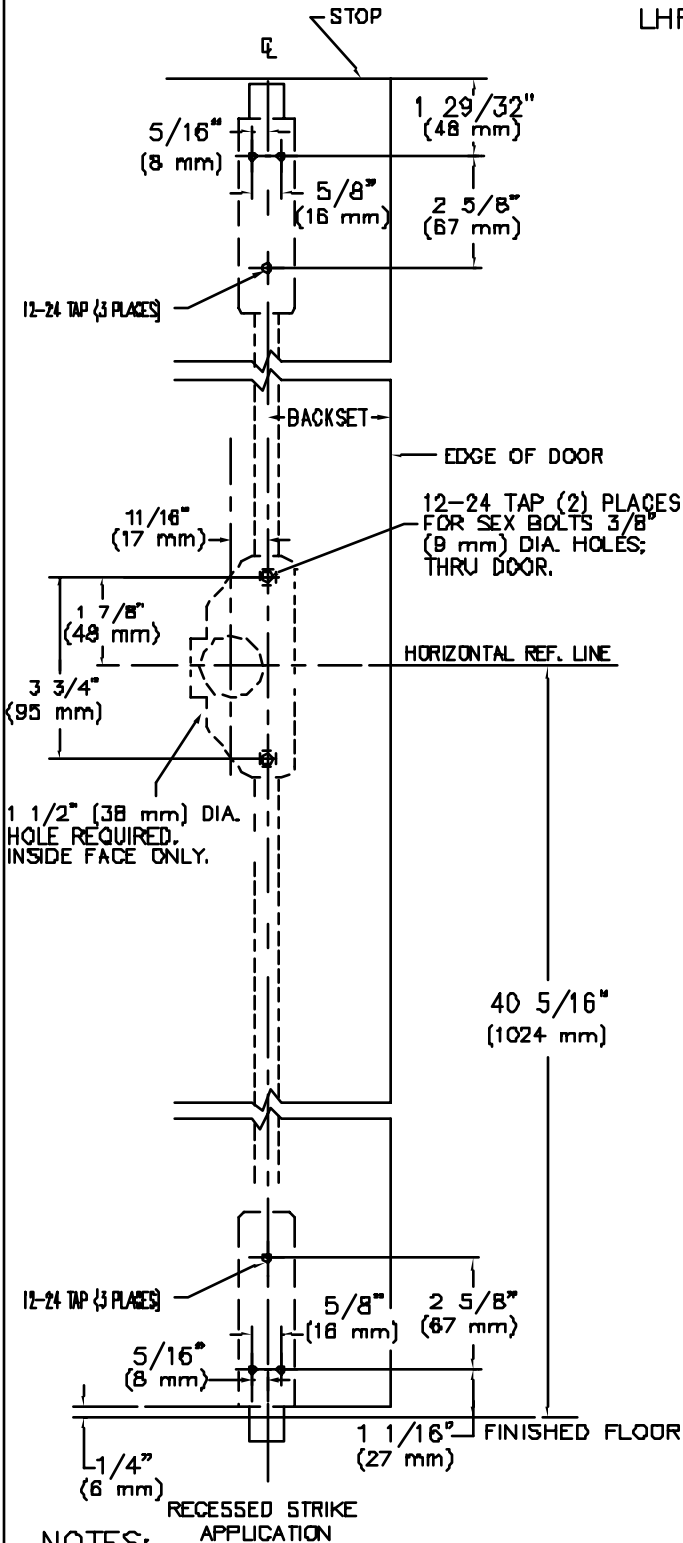


RHR SHOWN  
LHR OPPOSITE

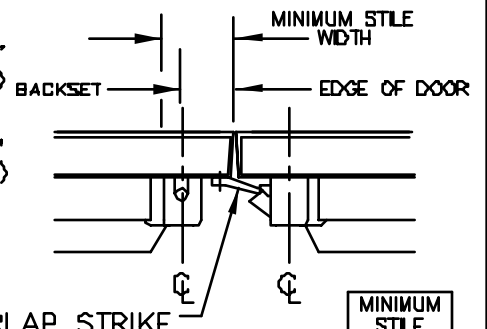
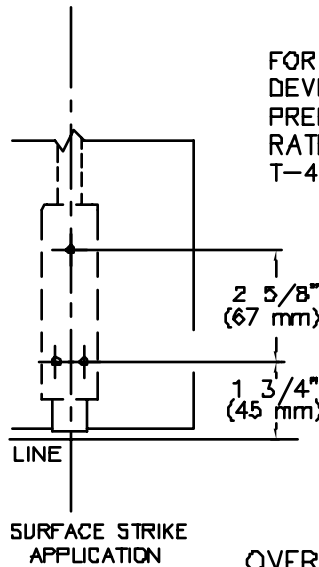


	BACKSET	MINIMUM STILE CYLINDER (NO TRIM)
MINIMUM	1 7/8" (48 mm)	3 1/16" (77 mm)
STANDARD	2 1/16" (52 mm)	3 1/4" (83 mm)

1 1/2" (38 mm) DIA. HOLE REQUIRED, INSIDE FACE ONLY.

12-24 TAP (2) PLACES FOR SEX BOLTS 3/8" (9 mm) DIA. HOLES; THRU DOOR.

FOR LESS BOTTOM ROD (LBR) DEVICES, DELETE BOTTOM LATCH PREP. POPPER REQUIRED ON FIRE RATED DEVICE, SEE TEMPLATE T-4012.



NOTES:

1. SEE MASTER SHEET #T-0001 FOR SUGGESTED DOOR REINFORCEMENT.
2. SEE ADDITIONAL TRIM TEMPLATE WHEN REQUIRED.
3. FOR LBR (LESS BOTTOM ROD) DEVICE, DELETE BOTTOM LATCH PREP.

	BACKSET	MINIMUM STILE CYLINDER (NO TRIM)
	1 5/8" (41 mm)	3 1/2" (89 mm)

REV. No. 2

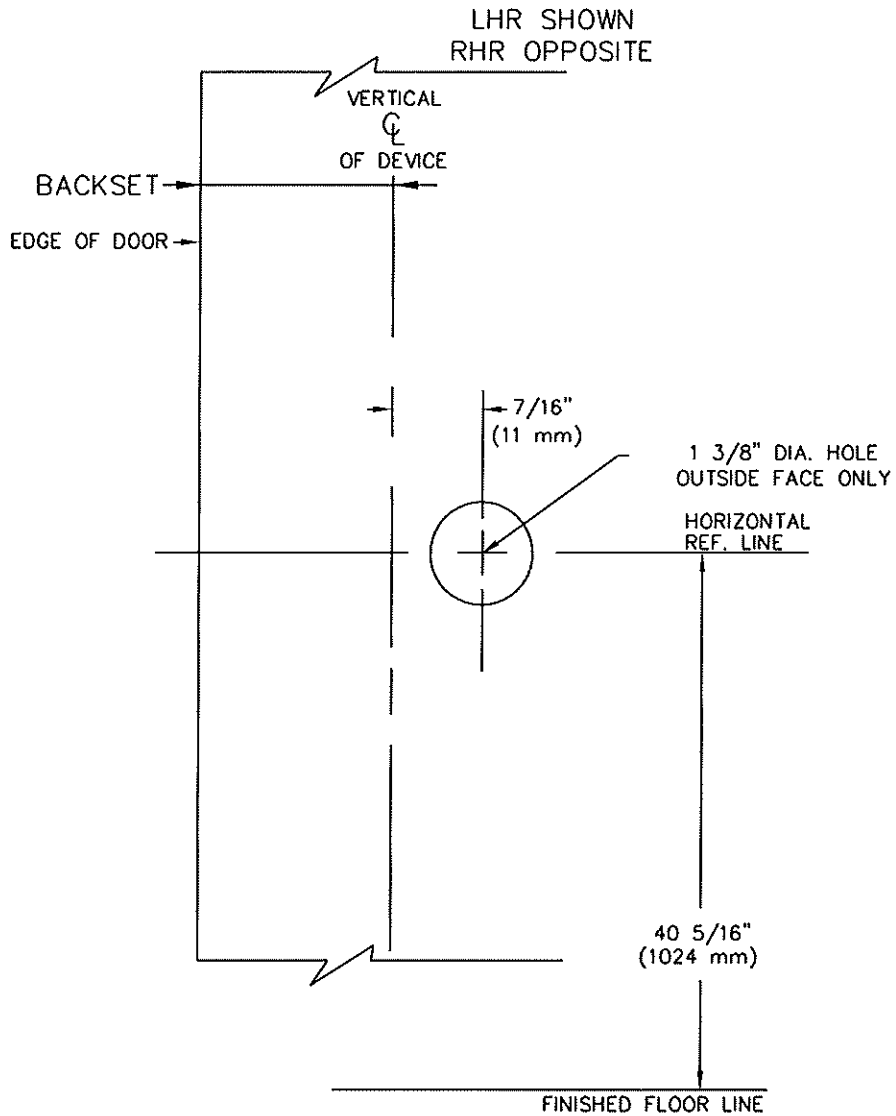
REVISION: ADD NOTE

DATE: 10-20-00



8400 & F8400 x CYLINDER (NO TRIM)  
VERTICAL ROD TYPE EXIT DEVICE


TEMPLATE NUMBER  
T-1048 ②



NOT TO SCALE

NOTES:

1. SEE MASTER SHEET #T-0001 FOR SUGGESTED DOOR REINFORCEMENT.

REV. No. 2	REVISION: hole dia	DATE: 7-2-14
	<p>CYLINDER PREP (NO TRIM) WHEN USED WITH 8000 SERIES DEVICE</p>	<p>TEMPLATE NUMBER T-2062 ②</p>