

Central Locking Cylinders

ZVZ.XIII



Application:

Lock cylinder for furniture locks which lock all desk and cabinet drawers.

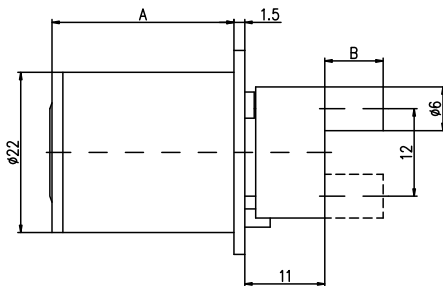
Specification:

Housing supplied in solid natural brass with nickel plating
 Reversible key made from nickel silver
 Cam rotation 180°, key rotation 360°
 Zinc plated steel mounting plate
 Plastic cam for pin length 8mm
 Brass cam for pin length 15mm and above

Included with the cylinder:

2 reversible keys (See "Special Functions and Keys" for key options)
 Plastic key clip in dark red for Kaba penta, in dark blue for all other systems
 Security Card for ownership registration and ordering duplicate keys
 Installation and Maintenance Instructions

Premier Systems:	6 Kaba penta	7 Kaba quattro pluS	12 Kaba gemini pluS
Patent expired systems	4 Kaba quattro S	2 Kaba gemini S	
Old systems	3 Kaba quattro ¹⁾	1 Kaba gemini ¹⁾	
Dealer systems	5 Kaba experT ²⁾	19 Kaba maTriX ²⁾	
Old dealer system		9 Kaba gemini T ²⁾	

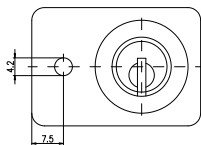
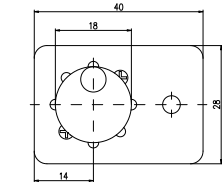


A = Cylinder length in mm
 B = cam pin length in mm

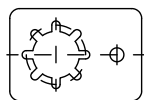
Lengths Body length (A) 25mm
 Cam pin length (B) 8, 15, 37 and 40mm

Options (See „Special Functions and Keys“ for details)

BAZ	Construction key	BAZ3	Construction key 3
BS19	Mounting plate type BS 19	BENE	Mouting plate type 75-4-011 for Bene



Mounting plate, Type BS 19



Accessories

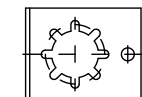
Order Code	Drawing No.	Description
ROSETTE.1008A.*	1008A-25	Slide on rosette for furniture cylinder Ø 22 mm, available in all surface finishes (* specify surface finish code at the end of the order code)

Standard Surface Finishes

NI - Nickel plated	MS - Brass natural	
--------------------	--------------------	--

Optional Surface Finishes

BH - brown light	MP - Brass polished	CR - Chrome standard
BM - brown medium	MSA - Brass antique	CRM - Chrom dull
BD - brown dark		CRP - Chrome polished
NIC - chemically nickel plated		
GO - gold plated		



Mounting plate, Type 75-4-011 for XIII BENE

Order Code System

System Code.Cylinder.Type.Surface finish. Cam pin length.Mounting plate option

Example:

6.ZVZ.XIII.NI.15 = penta.central lock cylinder.XIII.nickel plated.15mm cam pin

Please note that certain options, finishes and dimensions may be subject to extended factory lead times. Please contact our office via email on sales.uk@kaba.com or telephone (0) 870 000 5625.

¹⁾ Kaba gemini and Kaba quattro are only offered for existing master key systems.

²⁾ Kaba experT, Kaba maTriX and Kaba gemini T are only sold to authorized dealers.