

dormakaba exivo[®]:
Easy Access Control
in the cloud



Cloud-based
Flexible
Secure

exivo

Discover how easy access control can be

Imagine having access rights in your organisation fully under control - at any time, for any room and for each person. From your desk or when you are on the move. It is easy - with exivo.



Cloud-based

exivo is a cloud-based access solution. No server, no additional computer and no other software are required. We developed exivo specially for companies that need an access solution, but don't want to waste any time on installing or managing it.



Flexible

exivo adapts to your needs. You decide which doors are going to be additionally secured with electronic and wireless locking components. You can change or cancel access rights whenever you want. Adapting and updating the system couldn't be easier,



Secure

Due to the EU General Data Protection Regulation, companies are obliged more than ever to protect their sensitive data. Expensive equipment or goods may also be stored on the premises. With exivo you are always on the safe side.

Secure access systems – a must in every sector

Shared offices – clearly defined access

Shared office customers need fast and flexible access to premises – often 24/7. Yet, at the same time, there is a high rate of tenant turnover. exivo lets you manage access rights easily, securely and efficiently.

- Smartphone access for tenants
- Real-time issuing and cancelling of access rights
- 24h office use without 24h staffing
- Convenient innovative access solution



Solution examples for other sectors can be found at:
dormakaba.com/exivo





Small businesses

– flexible access with minimum effort

The smaller the business, the more stretched and valuable are the working hours of human resources. exivo opens doors to tradespeople and suppliers after business hours without staff having to be present, saving overtime and labour costs.

- Temporary access for tradespeople and suppliers
- Easy issuing of access rights to new employees
- No expensive investments in IT infrastructure



Branch offices

– on-demand access

In business, staff need to be deployed flexibly. Employees work in different branches. Many are part-timers and temporary workers, so personnel turnover is high. exivo always provides complete transparency.

- Fast and easy issuing of access rights
- No problems with lost keys
- Easy connectivity for branches



Sports facilities

– 24/7 booking and training

No matter whether first thing in the morning at the gym or a game of tennis at night – exivo lets you book in at sports facilities and obtain access rights without staff on the premises.

- 24/7 operation of sports facilities
- User-friendly online booking
- Access rights sent to your mobile phone
- Heating and lighting systems activated on demand



Service providers

– security for all data

Solicitors, accountants or advertising agencies – service providers have to protect their sensitive customer data. exivo provides full control of access management and accommodates freelancers flexibly.

- Clearly defined access rights and seamless access logging
- Controlled access for freelancers or suppliers
- Targeted protection of sensitive data and expensive equipment

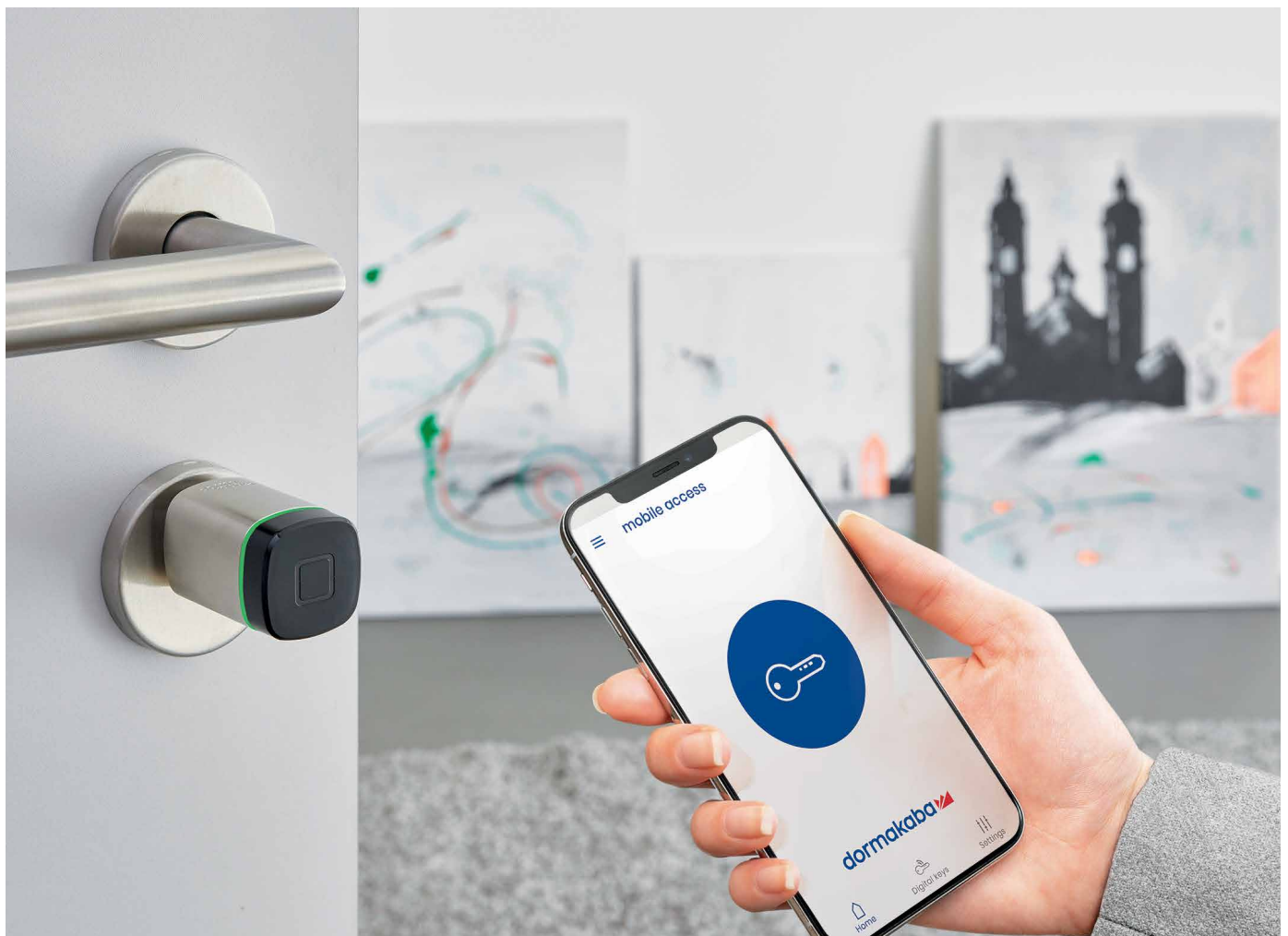
Easy planning

Fast assembly

Upon placing your order, your exivo partner can set up the system online even before it is installed. It is very simple thanks to the central exivo platform: upload floor plan, insert door components, create users and issue access rights. The system is ready for operation as soon as the components are installed. It couldn't be easier for you to get your access control started.

Benefits

- Easy planning and configuration via the cloud-based platform
- Fast installation with no interruption of daily business
- Straightforward setup, as thanks to the central platform, you do not need any special software or a server of your own



User-friendly operation

Convenient to use

New users can be created or user rights changed while the system is running. Thanks to the central exivo platform, you can do so easily and conveniently in the browser with no need to install software.

Benefits

- Hassle-free full-service operation by your exivo partner or do-it-yourself
- Issue and change rights over the intuitive exivo platform
- No problems with lost keys
- Secure access anywhere via the cloud and operation with your smartphone, tablet PC or computer



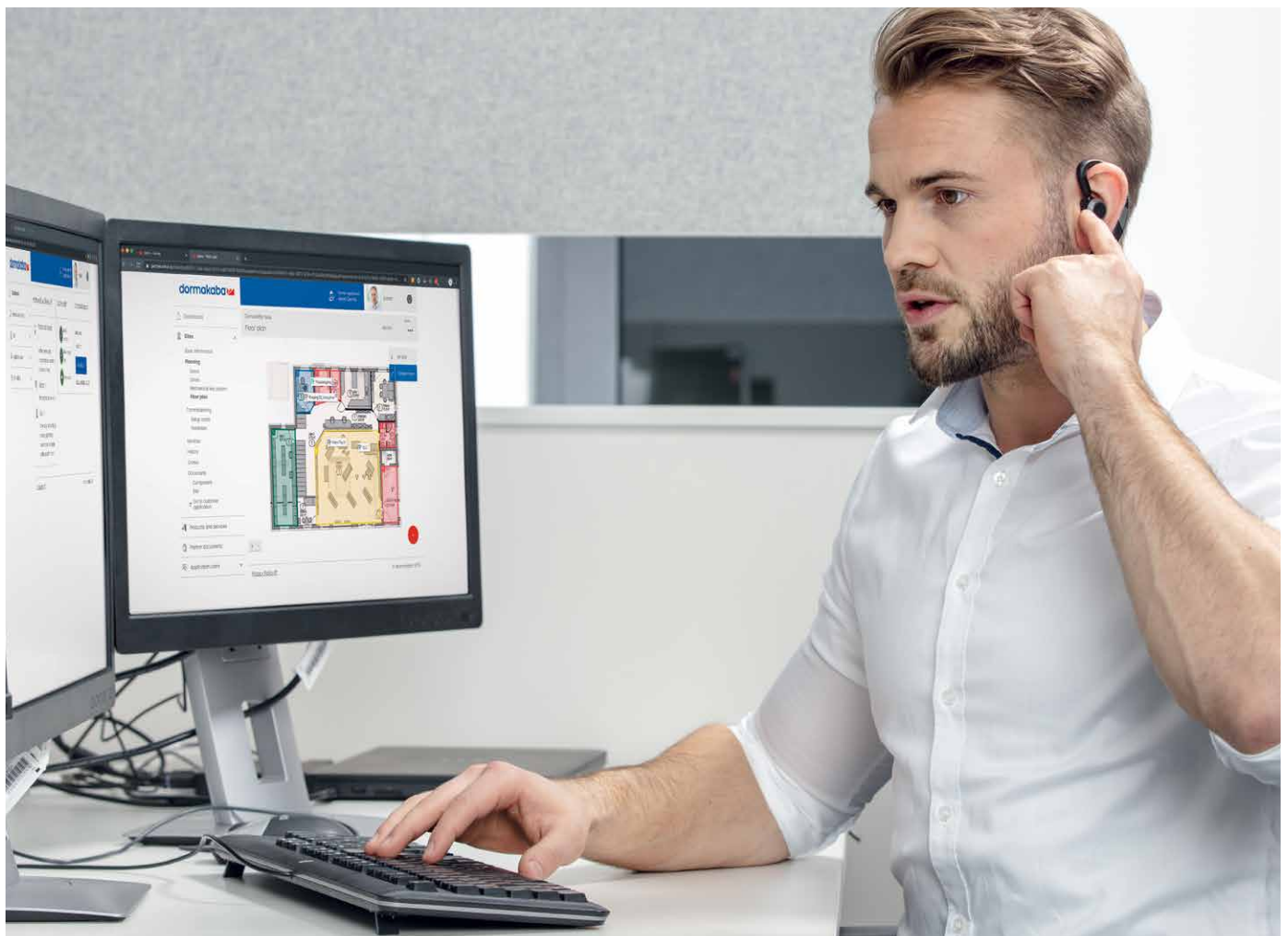
Easy service

Fast solution

If a question arises or an issue needs to be addressed – no problem. Thanks to the integrated support messenger you have a hotline to your exivo partner, who can also supply expert remote support immediately over the central exivo platform. exivo even lets your partner know in advance about upcoming service issues such as battery replacement.

Benefits

- Easy service requests to the exivo partner via the exivo platform
- Straightforward communication with your exivo partner via the integrated support messenger
- Automatic preventive status messages for early intervention
- Direct access to fault messages from components by your exivo partner
- Remote troubleshooting possible



Easy billing

Full transparency

You decide exactly what you need. And that is what you pay for – no more and no less. Your fixed costs stay the same. So you enjoy complete transparency and cost control.

Benefits

- Low initial investment and therefore, budget-conscious
- Predictable costs due to regular monthly fees
- Fair cost structure as you only pay for what you need



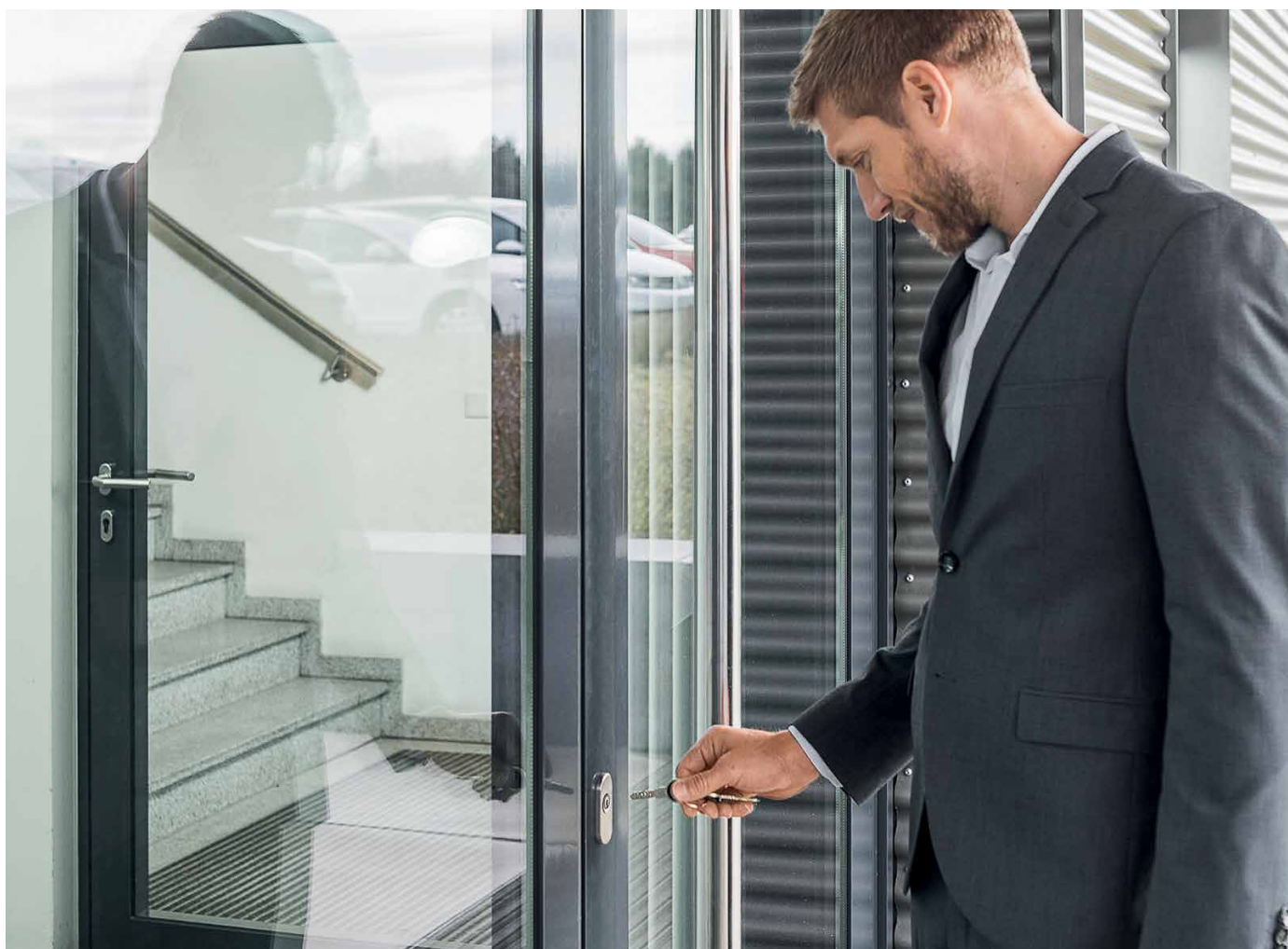
Easy extension

Comprehensive security

New security requirements, new doors or company expansion on the agenda? No problem. exivo can be adapted and extended whenever you want, not only with electromechanical and electronic locking components, but also with mechanical locks, if it is practicable. These locks and keys are also managed very simply via the exivo platform.

Benefits

- Easy extension and adjustment – the system grows with your organisation
- Retrofits for all doors and entrances
- Integrated management of keys and mechanical locks
- Integrated management of keys, cards, key fobs and other access media such as mobile phones as well as the relevant users
- exivo can even manage the mechanical locking systems of other providers.



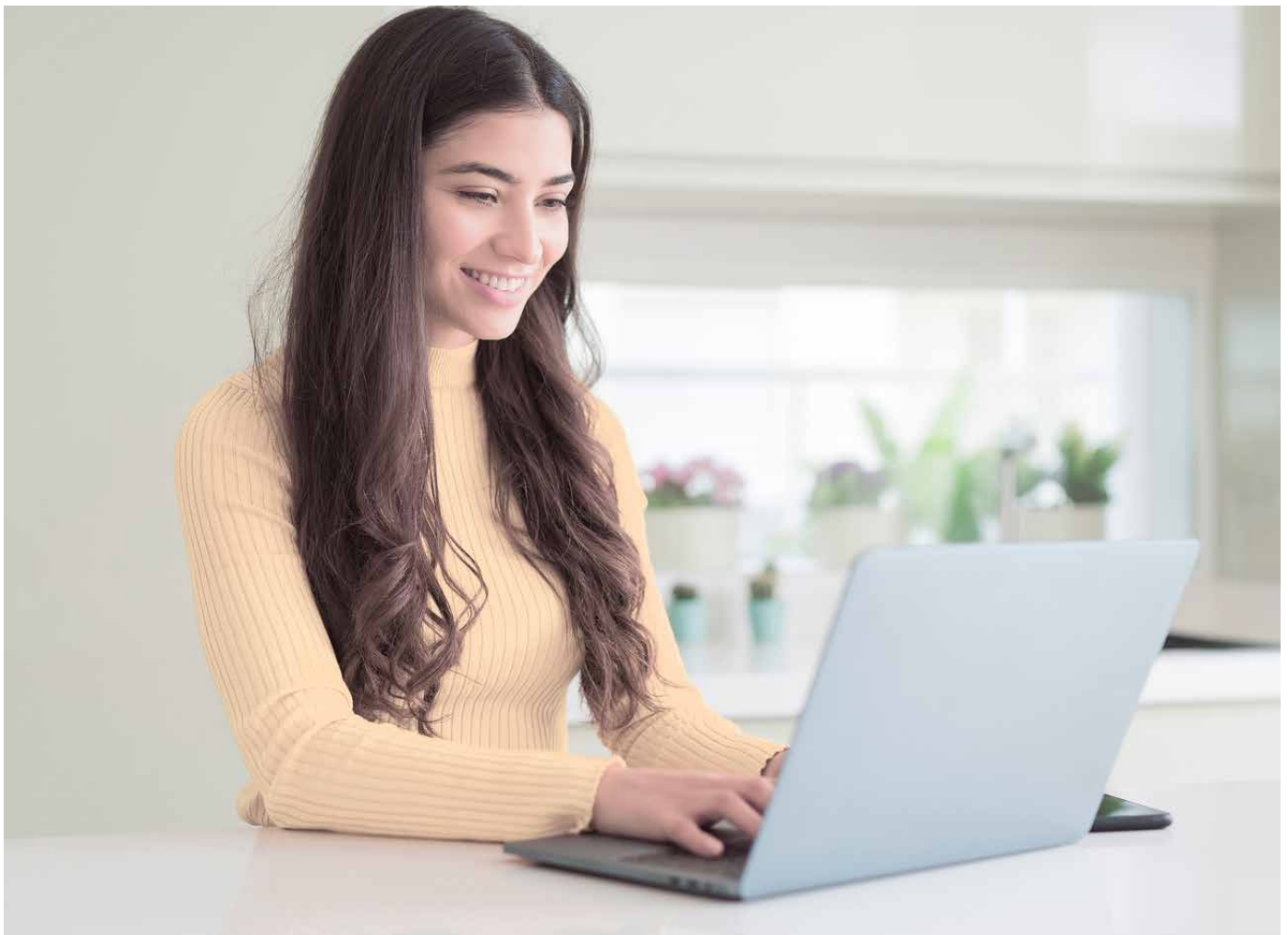
Easy updating

Automated and secure

No server, no additional computer and no other software are required on site. Everything runs over the central exivo platform. This ensures that you always benefit from all new functions and updates. Security measures are therefore also always updated automatically.

Benefits

- Easy function extension thanks to the ongoing development of the cloud-based exivo platform
- Immediate availability of updates via the automatic update function of the central exivo platform
- Maximum security thanks to central exivo platform management on secure protected servers



exivo

Overview of all elements and benefits



Your exivo access solution

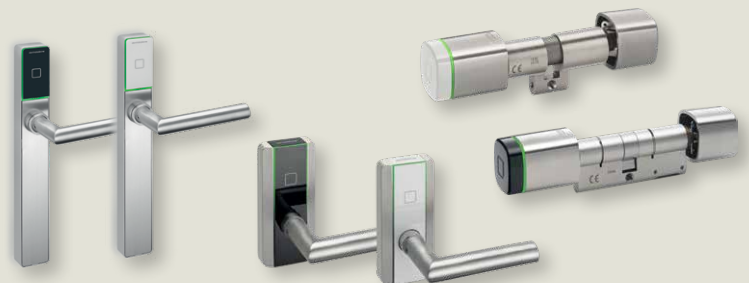
- use your exivo app
- customise your exivo app to suit your corporate design or
- integrate it fully into your corporate application (API interface)



Planning, installation and optional full-service operation by your exivo partner



Management and control from anywhere via secure online access (PC, laptop, tablet or mobile phone)



Electronic and wireless locking components (electronic door furniture and digital cylinders)



Access media (key fobs, ID cards, smartphone, keys with/without RFID chip)



Cloud-based



Online readers



Door controllers and wireless gateways

How exivo benefits your business:

- Access system without additional software or servers
- Easy intuitive operation
- Full support and operation by your exivo partner
- System always up-to-date in terms of functions and security, with no effort on your part
- You decide whether you want your exivo partner to take care of everything for you, or do things yourself, such as creating users
- Cost security and transparency
- Fixed costs, no unpleasant surprises

How your employees and customers can benefit from exivo:

- User-friendly operation
- Free choice of media including smartphones
- No problems with lost keys
- Access rights can be adjusted at short notice, for instance when someone has to enter the premises after business hours or temporary employees, visitors etc. need authorised access

3 easy steps

to your access control solution

1

Find out more and contact us

More information about exivo is available at dormakaba.com/exivo.

Of course, you can simply send us an e-mail to:

marketing.ead.mks@dormakaba.com

If you tell us where you are based, we can find a suitable exivo partner near you.

2

Your exivo partner will consult on your requirements

The exivo partner near you will get in touch to arrange an appointment for initial planning of your exivo platform. We will then send you your personal detailed investment breakdown. Only once everything is planned the way you want, do you commission your exivo partner with the project.

3

Delivery and installation

Your exivo partner takes care of system delivery and installation. You don't have to lift a finger and can get going right away. As soon as you place your order you can set up your access in the live system. You can rest easy knowing that if you need help or assistance, we and your exivo partner are at your service.

We make access in life **smart and secure**

Our Offering

Door Hardware
Entrance Systems
Electronic Access & Data
Interior Glass Systems
Mechanical Key Systems

Lodging Systems
Safe Locks
Key Systems
Movable Walls
Services



Consulting
Planning
Realisation
Operation
Maintenance

Our Focused Industries



Our Values

Customer first

We always focus what we do on the needs of our customers, partners and users.

Curiosity

We constantly scout for trends as the inspiration for future-focused solutions.

Performance

We go the extra mile to ensure customer satisfaction and set the bar high in terms of security, quality and reliability.

Courage

We are committed to continuously developing solutions that generate genuine added value for our customers and users.

Trust

Our core corporate value is at the heart of everything we do, so customers can rest assured that they are in good hands.

Our Company

More than
150
years of experience

15,000
employees

130
countries

ISO 9001
Certificate



More than
2,000
patents



Sustainability Report
GRI Standards



stock-listed at
SIX Swiss Exchange (DOKA)

We call it **trusted access**

Authorised partner:



Our Sustainability Commitment

We are committed to foster a sustainable development along our entire value chain in line with our economic, environmental and social responsibilities toward current and future generations. Sustainability at product level is an important, future-oriented approach in the field of construction. In order to give quantified disclosures of a product's environmental impacts through its entire life cycle, dormakaba provides Environmental Product Declarations (EPD), based on holistic life cycle assessments.



For further information please feel free to visit us:
www.dormakabagroup.com

Subject to changes without prior notice. WN 05480151532.
Version 03/2022. © dormakaba.



**Door
Hardware**



**Entrance
Systems**



**Electronic
Access & Data**



**Interior Glass
Systems**



**Mechanical
Key Systems**



**Safe
Locks**



**Lodging
Systems**



Service

dormakaba Australia
12-13 Dansu Court Hallam
VIC 3803
T: 1800 675 411
info.au@dormakaba.com
www.dormakaba.com.au

dormakaba New Zealand
Head Office
Building P / 61-69 Patiki Road
Avondale Auckland 1026
T: 0800 436 762
info.nz@dormakaba.com
www.dormakaba.co.nz