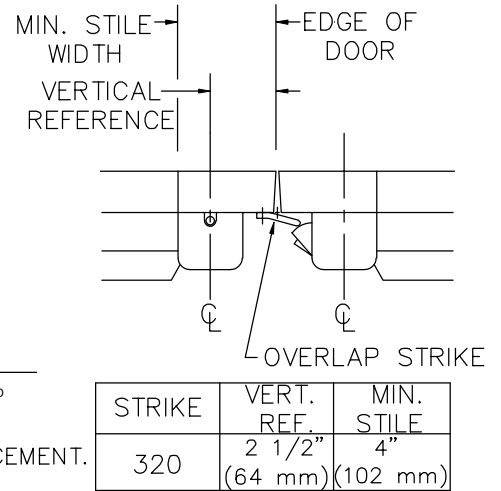
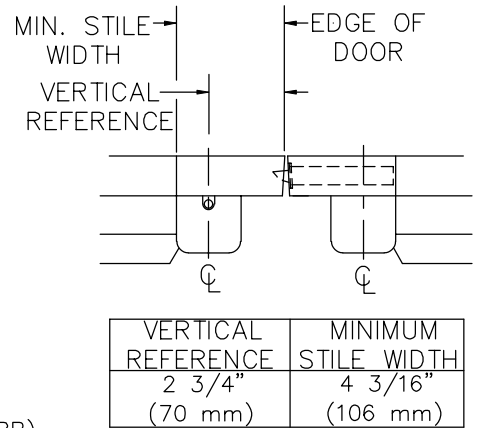
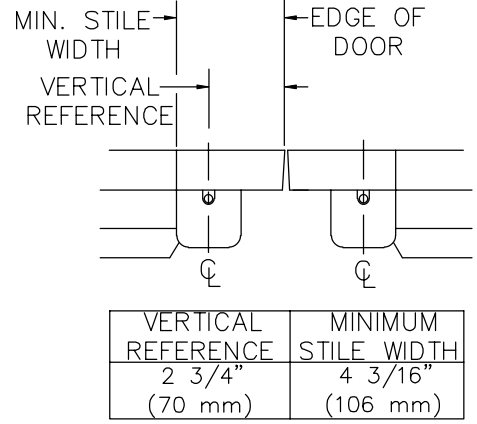
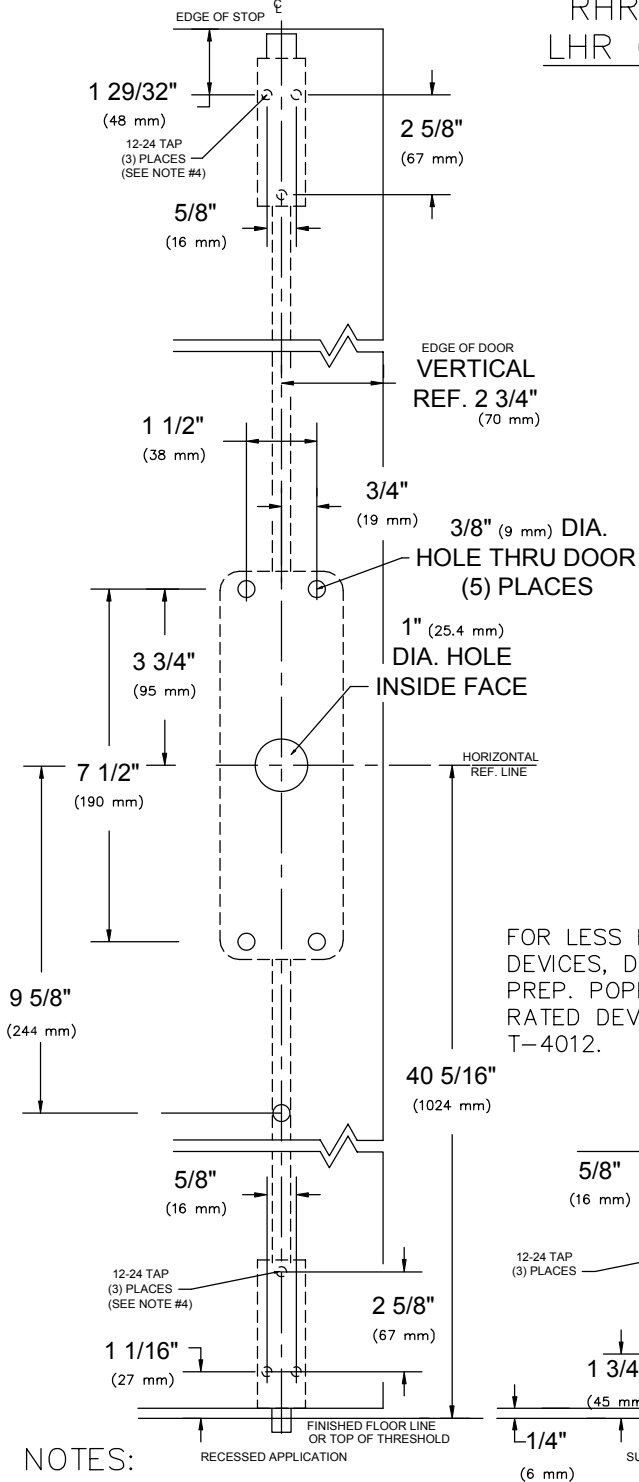



RHR SHOWN  
LHR OPPOSITE



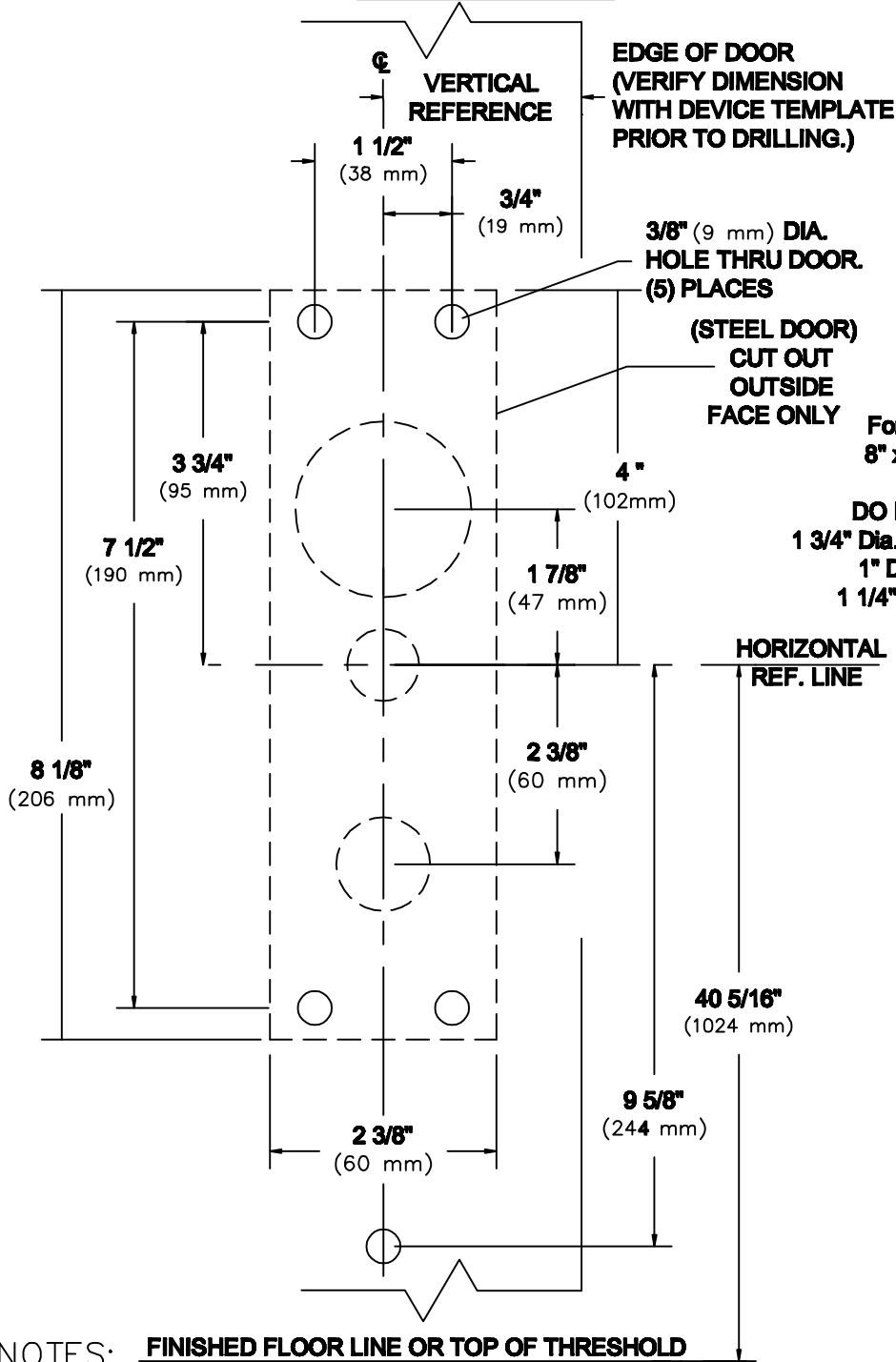
FOR LESS BOTTOM ROD (LBR) DEVICES, DELETE BOTTOM LATCH PREP. POPPER REQUIRED ON FIRE RATED DEVICE, SEE TEMPLATE T-4012.

NOTES:

1. SEE MASTER SHEET #T-0001 FOR SUGGESTED DOOR REINFORCEMENT.
2. SEE ADDITIONAL TRIM TEMPLATE WHEN REQUIRED.
3. DEVICE WILL COVER STANDARD SDI CUTOUT.
4. FOR SEX NUTS USE 3/8" DRILL.

REV. No. 5	REVISION: Dimension Correction	DATE: 8-14-03
	9400 & F9400 x HTT22, or HRT22	TEMPLATE NUMBER
	9400 & F9400 x HTT05/06, or HRT05/06 VERTICAL ROD EXIT DEVICE	T-9406 ⑤

RHR SHOWN  
LHR OPPOSITE



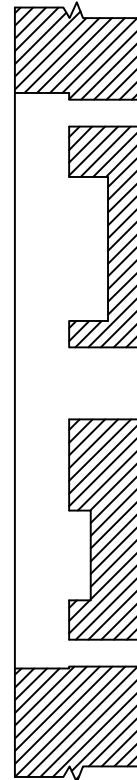
**EDGE OF DOOR  
(VERIFY DIMENSION  
WITH DEVICE TEMPLATE  
PRIOR TO DRILLING.)**

**3/8" (9 mm) DIA.  
HOLE THRU DOOR.  
(5) PLACES**

**(STEEL DOOR)  
CUT OUT  
OUTSIDE  
FACE ONLY**

**For Wood or Composite Doors;  
8" x 2 1/4" x 3/4" Deep Min. Cut  
Out. (Outside Face)  
DO NOT CUT THROUGH DOOR!  
1 3/4" Dia. Min. Hole x 1 1/4" Deep As Shown  
1" Dia. Min. Hole Thru As Shown  
1 1/4" Dia. Hole x 1" Deep As Shown**

**HORIZONTAL  
REF. LINE**



**NOTES: FINISHED FLOOR LINE OR TOP OF THRESHOLD**

1. SEE MASTER SHEET #T-0001 FOR SUGGESTED DOOR REINFORCEMENT.
2. SEE ADDITIONAL DEVICE TEMPLATE WHEN REQUIRED.
3. TRIM WILL COVER STANDARD SDI CUTOUT.

**NOT TO  
SCALE**

REV. No. 6

REVISION: Dimension Correction

DATE: 12-21-09



HTT22 or HRT22  
HTT05/06 or HRT05/06  
TRIM

TEMPLATE NUMBER  
T-9005 ©