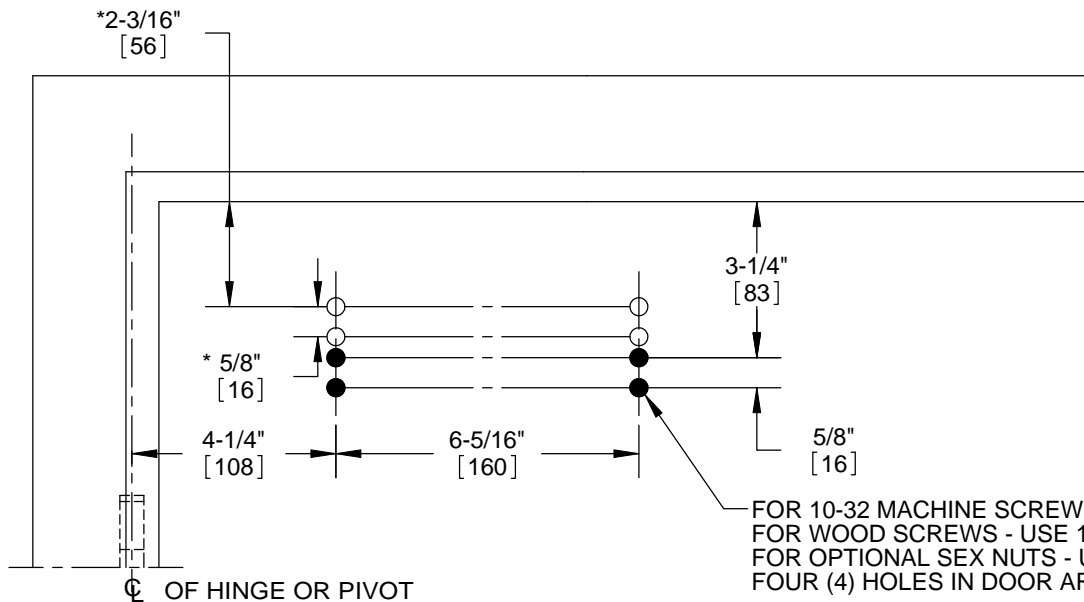


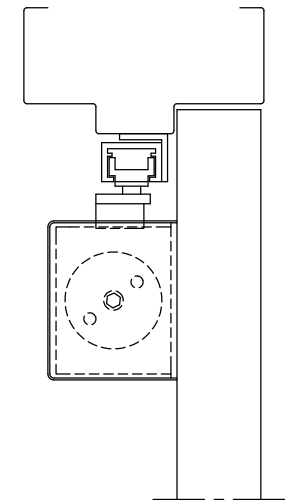
FOR 10-32 MACHINE SCREWS - USE No. 21 (0.159") DRILL & TAP
 FOR WOOD SCREWS - USE 1/8" DRILL
 THREE (3) HOLES IN FRAME ARE FOR ANGLE BRACKET

NOTES:

- 1) DO NOT SCALE DRAWING
- 2) DIMENSIONS ARE IN INCHES/[MM]
- 3) LEFT HAND DOOR SHOWN
- 4) SEX NUTS ARE RECOMMENDED FOR ATTACHMENT OF COMPONENTS ON UNREINFORCED, COMPOSITE OR LABELED FIRE DOORS.
- 5) MAXIMUM DEGREE OF OPENING 135°. FOR DOORS OPENING OVER 135°, AN AUXILIARY STOP MUST BE INSTALLED.
- 6) TEMPLATE IS FOR 4-1/2" X 4-1/2" BUTT HINGES AND 3/4" OFFSET PIVOTS.
- 7) MINIMUM DOOR WIDTH IS 26".
- 8) HOLD OPEN RANGE IS FROM 55° TO 130°.
- *9) 2-3/16" & 5/8" ARE OPTIONAL MOUNTING FOR NARROW TOP RAIL.



FOR 10-32 MACHINE SCREWS - USE No.21 (0.159") DRILL & TAP
 FOR WOOD SCREWS - USE 1/8" DRILL
 FOR OPTIONAL SEX NUTS - USE 3/8" DRILL
 FOUR (4) HOLES IN DOOR ARE FOR MOUNTING PLATE



DOOR CLOSER MODELS: TS93 PT, PTH
 PARALLEL TRACK INSTALLATION (PUSH SIDE MOUNT)
 NON-HOLD OPEN AND HOLD OPEN



DORMA Door Controls
 Reamstown, PA 17567