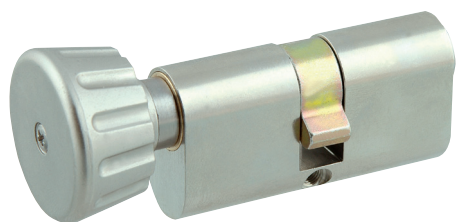


# Thumbturn Cylinder, Union Profile DKZUN



## Application:

For all mortise door locks in union (UK) oval profile. The thumbturn knob is installed on the inside allowing the door to be safely un/locked from the inside without a key.

## Specification:

Housing supplied in solid natural brass with nickel plating

Reversible key made from nickel silver

Emergency key function

(Please order emergency key separately, see chapter "Special Functions and keys").

## Included with the cylinder:

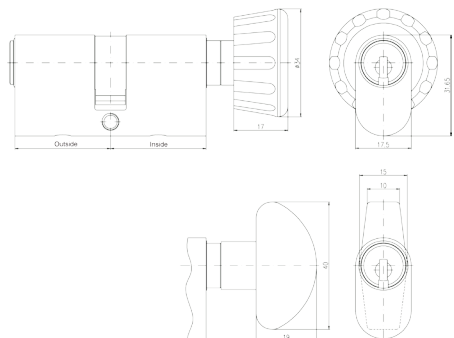
2 reversible keys (Specify separately, see "Special Functions and Keys" for options)

Plastic key clip in dark red for Kaba penta, in dark blue for all other systems

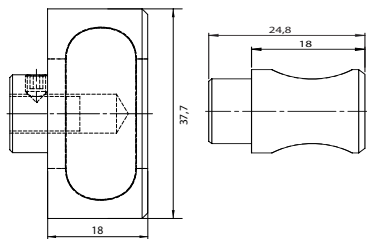
1 cylinder fastening screw M5 x 65 mm

Security Card for ownership registration and ordering duplicate keys

Installation and Maintenance Instructions



Mega knob



D-line knob

<b>Premier Systems:</b>	<b>6</b> Kaba penta	<b>7</b> Kaba quattro plus	<b>12</b> Kaba gemini plus
Patent expired systems	<b>4</b> Kaba quattro S	<b>2</b> Kaba gemini S	
Old systems	<b>3</b> Kaba quattro <sup>1)</sup>	<b>1</b> Kaba gemini <sup>1)</sup>	
Dealer systems	<b>5</b> Kaba expert <sup>2)</sup>	<b>19</b> Kaba maTriX <sup>2)</sup>	
Old dealer system		<b>9</b> Kaba gemini T <sup>2)</sup>	

**Lengths** Standard - each side from 30 to 100 mm in 5 mm steps  
Special over 100 mm

**Options** (See „Special Functions and Keys“ for details and further options)

RK	Round knob	MK	Mega Knob	OK	Oval knob
BAZ	Construction key	BAZ3	Construction key 3	GF	Emergency key
MK Mega Knob is only available in nickel coated (NI) and polished brass (MP)					
DF	Duplo function		Special Cams	KT	Electrical contact
FZG	Freewheel cam for gear operated (panic) locks			BL	Blind on one side
RB	Relative cam movement			SSW	Weather protection
DIN.ZS	DIN18252 certified: pulling protection			DIN	Drilling protection
VDSB.ZS	VdS certified: Pulling and drilling protection			VDSB	Drilling protection
LAM	Pulling protection with steel shims in housing			ST	Steel housing

## Standard Surface Finishes

NI - Nickel plated	MS - Brass natural	
--------------------	--------------------	--

## Optional Surface Finishes

BH - brown light	MP - Brass polished	CR - Chrome standard
BM - brown medium	MSA - Brass antique	CRM - Chrom dull
BD - brown dark		CRP - Chrome polished
NIC - chemically nickel plated		
GO - gold plated		

## Order Code System

System Code.Cylinder Type.Length(function)+Length(function).Surface finish.Option

Example:

6.DKZUN.30+40RK.NI = penta.double thumbturn cylinder union profile.30+40 round knob.nickel plated

<sup>1)</sup> Kaba gemini and Kaba quattro are only offered for existing master key systems.

<sup>2)</sup> Kaba expert, Kaba maTriX and Kaba gemini T are only sold to authorized dealers.

Please note that certain options, finishes and dimensions may be subject to extended factory lead times. Please contact our office via email on [sales.uk@kaba.com](mailto:sales.uk@kaba.com) or telephone (0) 870 000 5625.