

The 3-in-1 lock cylinder

Change the access
permission with a
turn of the key



Increased security

Modify access – simply by turning the key

Your requirements:

You don't want to have to immediately replace all the lock cylinders when a key is lost, or a tenant moves out and takes the key with them. Or, for example, you no longer wish to allow tradespeople access after completion of the construction phase.

Principle of operation:

There are three generations of keys for the self-changeable lock cylinder (or two generations of keys for SUZ1). The lock cylinder keying can be changed up to two times. Rotating a next-generation key in the lock cylinder means that the previously used key is no longer able to unlock the door. No additional tools or keys are required for this.



1st generation keys



2nd generation keys

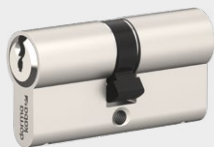
When inserted and rotated 360°, the 1st generation keys lose their locking authorization.



3rd generation keys

By inserting and rotating them 360°, the 2nd and 1st generation keys lose their locking authorization.

Version SUZ 1 - 2nd generation keys, convert once
Version SUZ - 3rd generation keys, convert twice



Lock cylinder

The conversion process is carried out without a separate conversion key – no replacement of the lock cylinder required.

Tenant changes

With increased security and peace of mind

Your requirements:

Are you a landlord or building manager who needs to ensure that all keys have been handed over in the event of a change in tenant? Has the tenant created their own key copies and not handed them in?

Our solution:

Using the SUZ lock cylinder from dormakaba means you can withdraw the access authorisation of the predecessor key and therefore of the previous tenant, easily, by rotating it once.

You can also easily demonstrate the simple conversion of the lock cylinder to a new tenant.

This also gives a sense of security, because from this point in time on, only this key generation has authorisation for the lock.

Without replacing the lock cylinder, as the owner, you'll save on administrative input and costs of replacing the lock cylinder. You can perform this process up to two times on a lock cylinder.

Advantages for landlords, building managers and residential developers

- Cost savings through converting the lock cylinder yourself – can be done up to two times
- The master key system does not have to be replaced immediately
- Reduces the administrative input e.g. for key management
- Can be combined with other special functions



For security at home

Even when you lose a key

Your requirements:

Whether because of a hectic day or perhaps your child's carelessness, a key can easily be lost. The result is a security risk for your own four walls and the next logical step would be to replace the master key system.

Our solution:

In this case, the dormakaba SUZ lock cylinder offers a speedy solution. By using a new key generation, you can immediately withdraw access to the key group to which the lost key belonged. Which means you have the security of your property in your own hands and can react when needed in no time at all. As you can perform this process up to two times in total, you have a 3-in-1 lock cylinder.

Advantages for property owners

- Increased security – one lost key can have its locking authorisation withdrawn without using a key service when the new generation is used
- Conversion on the lock cylinder is possible up to two times, without replacing the lock cylinder

Added value for you

Useful special functions for lock cylinders

Depending on your requirements, you can supplement your individual solution with one of our numerous special functions. These offer added value in terms of functionality and benefits. For details, please refer to the brochure **"Special functions for serrated key systems."**

Double cylinder with key override (BSZ)

Key left in the lock?

Not a problem!

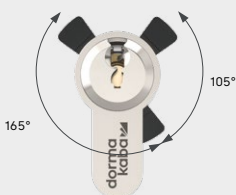
The double cylinder makes it possible to open the door from the opposite side with an authorised key when the key is inserted on one side and rotated in any direction.



Cylinder with personnel key (PS)

Staff access? Yes, as long as it's not locked.

The personnel key only activates the latch of the conversion lock and only opens a door if it has been previously unlocked – e.g. at the start of business. The lock bolt can only be operated/the door can only be opened and closed with an owner's key. Required: doors with a rigid knob or fixed handle element.



Only the lock latch is operated with the personnel key.



The owner's key, however, can fully operate the lock cylinder (lock bolt and latch operation).

Your authorised dormakaba locksmith:

Subject to modifications.
WN 5598851532, Version 07/23

Any questions?
We would be happy to advise you.

dormakaba
International Holding AG
Hofwissenstrasse 24
CH-8153 Rümlang
T +41 44 818 90 11
info@dormakaba.com
www.dormakaba.com