

High security key switch

3110 Series



Description:

High-security rotary cam key switch featuring a sophisticated multi-row pin tumbler cylinder mechanism. Suitable for heavy-duty industrial applications where secure control of switching is required.

The 3110 range offers functionality as well as a broad range of switching options to service a wide variety of industrial applications.

Available in our patented Kaba 20 and quattro Plus cylinder systems offering a fixed flange, threaded cylinder body, supplied fitted with a multi-pole, multi-deck, quick connect bayonet fitting switch providing multi indexing positions for most cam switch applications.

Kaba 20 Cylinder Features:

The Kaba 20 cylinder range, with its patent-protected reversible key (K37), is ideal for heavy usage, and industrial and commercial applications where security and reliability are paramount. Swiss precision engineered with In-house design solutions available for bespoke applications

- Strong reversible nickel silver keys
- Kaba 20 key blanks are protected by European patent protection Until 2033 (K37 only)
- 4 radially arranged pin rows on up to 22 tumbler pin pairs giving a high degree of protection against surreptitious manipulation
- High security key registration
- Coloured key clips available for easy identification

Patented Systems:

- Kaba 20 (K37)

O1 Legacy Systems:

- Kaba 20 (P1)

quattro Plus Cylinder Features:

The dormakaba quattro Plus cylinder range, with its patent protected reversible key (K85), is designed for all applications where security, durability and strict factory key control are paramount

- Strong reversible nickel silver keys.
- dormakaba quattro plus key blanks are protected by patent and are not available to the trade (K58 Systems)
- 4 radially arranged pin rows on up to 22 tumbler pin pairs on up to 44 possible positions - allowing more than 2 trillion possible keyings.
- European patent protection until 2033 (K85 Systems)
- High security key registration.
- 12 multi coloured key clips available for easy identification.

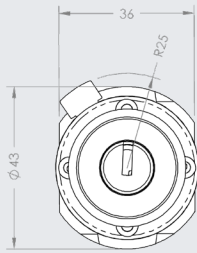
Patented Systems:

- quattro Plus (K85)

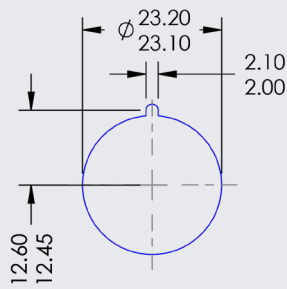
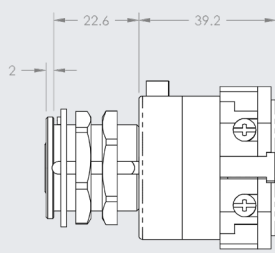
O1 Legacy Systems:

- quattro Plus (K58)

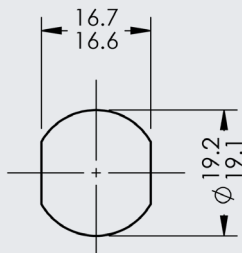
Key switch end view



Key switch side view



Kaba 20 Panel Cutout



quattro Plus Panel Cutout

CA10 Dimensions:

As standard, dormakaba key switches incorporate the Kraus & Naimer CA10 switch body. Our cylinders can work with a variety of other Kraus & Naimer switches such as the CA20, providing a complete tailored solution to your switching needs.

Please speak to your dormakaba representative for more information

Switch Stages	Dimension A
1 Stage	39.2mm
2 Stages	48.7mm
3 Stages	58.2mm
4 Stages	67.7mm
5 Stages	77.2mm
6 Stages	86.7mm
7 Stages	96.2mm
8 Stages	105.7mm
9 Stages	115.2mm
10 Stages	124.7mm
11 Stages	134.2mm
12 Stages	143.7mm

Customer Cylinder Requirements:

- Is this part of a Master Plan (Yes/No)?

- If Yes, please provide additional information:

New Master Plan required? _____

Existing Master Plan reference? _____

- Please describe required key entry, key movement and the number of positions required _____

- Number of keys required with cylinder? _____

Switch Requirements:

- Amps / Voltage required _____

- Number of Switch Poles required _____

- Inductive or Resistive Load? _____

- Please describe the application of the switch _____

Datasheet: PDS-028-02

Any questions? We would be happy to advise you.

Contact us on: **01884 256464**