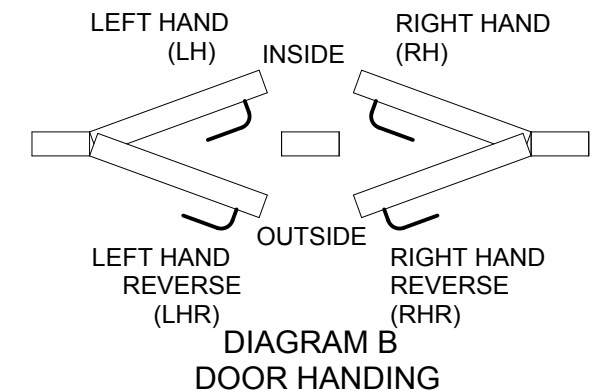
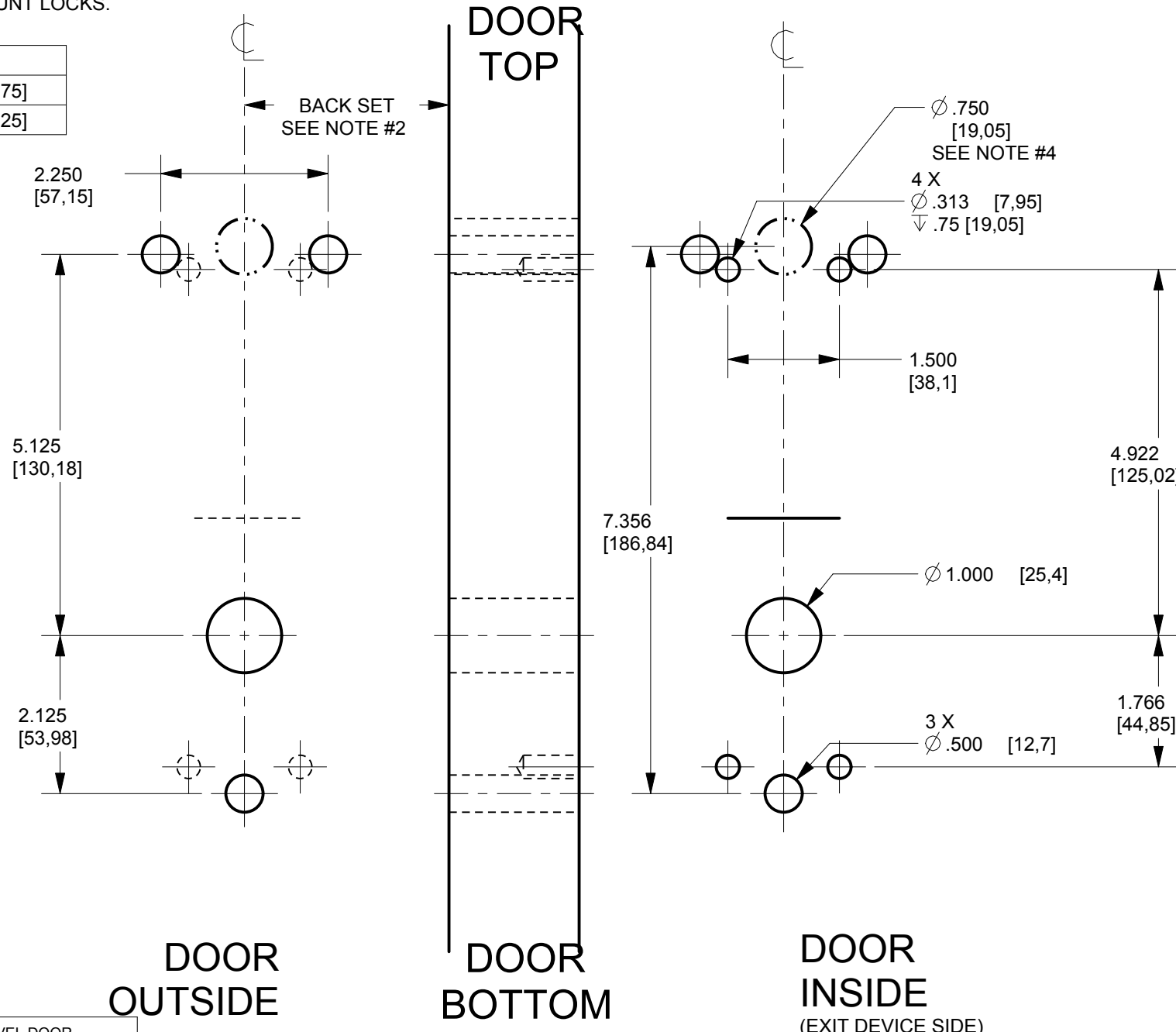


- NOTES:
- FOR EXIT DEVICE AND MORTISE LOCK CUT-OUT REFER TO EXIT DEVICE MANUFACTURER INSTALLATION INSTRUCTIONS.
  - BACKSET SHOWN FOR REFERENCE ONLY, ADJUST BACKSET TO EXIT DEVICE MANUFACTURER INSTALLATION INSTRUCTIONS. BACKSET TO BE ADJUSTED TO LOW AND HIGH BEVEL DOOR EDGE AS PER DIAGRAM A TABLE.
  - DIMENSIONS ARE SYMETRICAL ABOUT  $\text{CL}$  UNLESS OTHERWISE NOTED.
  - THIS HOLE ONLY FOR LOCK WITH MESSENGER OR BLUETOOTH.
  - FOR COMPLETE HOLE PATTERN REFER TO DRAWING DT-515149 OR IP-515149 FOR RIM AND MORTISE LOCKS OR DT-515150/IP-515150 FOR SURFACE MOUNT LOCKS.
  - ALL DIMS ARE IN INCHES/[mm]

REVISIONS					
REV	ECN	DESCRIPTION	FAIT PAR MADE BY	VERIF PAR CHK'D BY	DATE
1	13259	ORIGINAL RELEASED FOR PILOT	P.P.	A.T.	12AU 2009
2	15719	NOTES ADJUSTED, NEW DESCRIPTION	A.E.	C.D.	20JA 2016

SPECIFIC TOLERANCES	
DISTANCES	$\pm 0.030$ [ $\pm 0.75$ ]
HOLES $\varnothing$	$\pm 0.010$ [ $\pm 0.25$ ]



**VERSION 4**  
**LHR LOCK**

DIAGRAM A - BACK SET AJUSTEMENT FOR 3 BEVEL DOOR

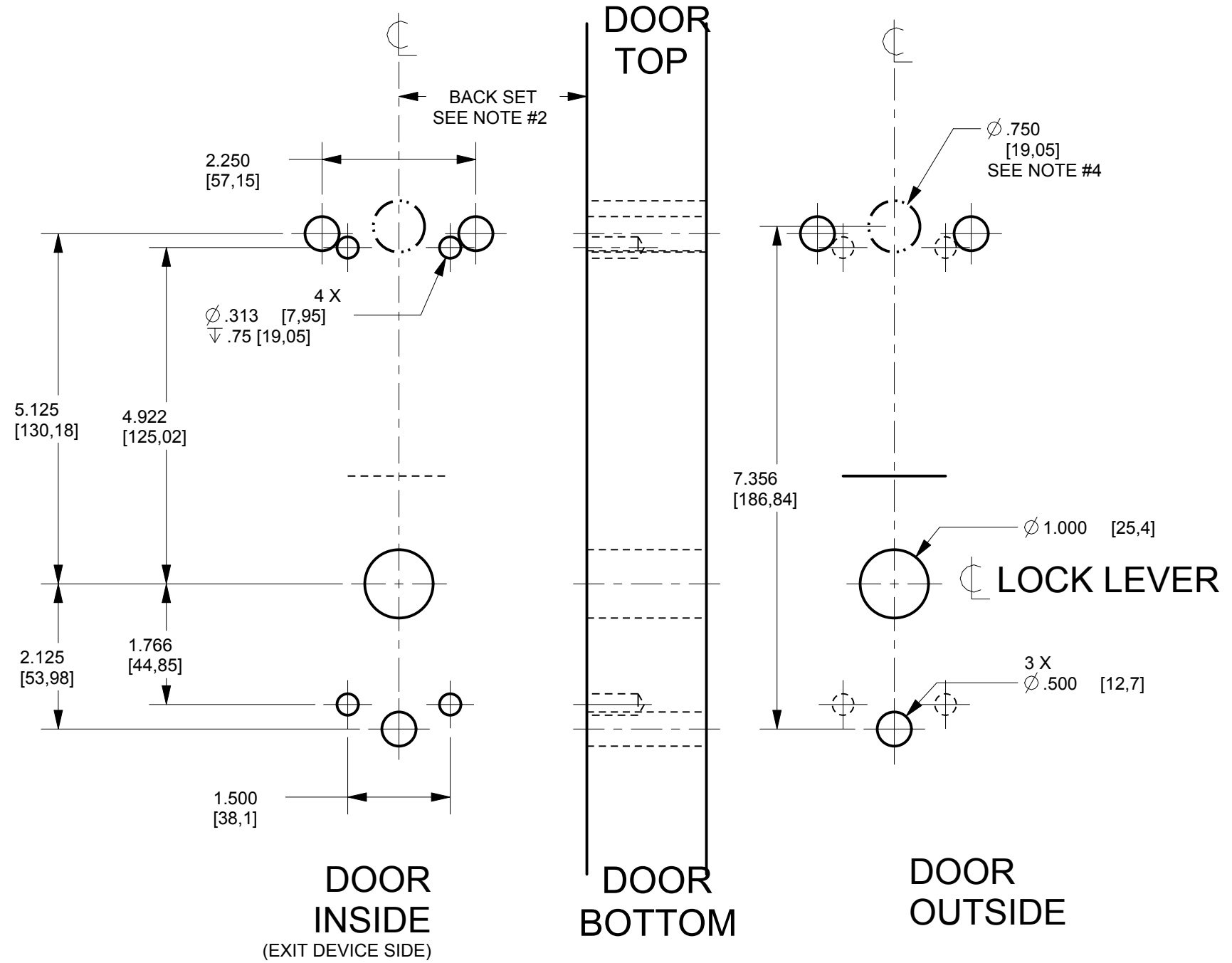
DOOR THICKNESS DIMENSION X	BACK SET AJUSTEMENT DIMENSION Y
1.25 (31,8mm)	.032 (0,81mm)
1.50 (38,1mm)	.039 (1,00mm)
1.75 (44,5mm)	.046 (1,17mm)
2.00 (50,8mm)	.052 (1,32mm)
2.25 (57,2mm)	.059 (1,50mm)
2.50 (63,5mm)	.065 (1,65mm)
2.75 (69,9mm)	.072 (1,83mm)

- SYMBOLS:
- $\nabla$  DEEP
  - $\square$  COUNTERBORE
  - $\text{CL}$  CENTER LINE
  - $\varnothing$  DIAMETER
  - $\leftarrow$  NOT TO SCALE

SCALE 1:2

	DIMENSIONS CRITIQUES CRITICAL DIMENSIONS	SANS AUTRES SPECIFICATIONS, LES DIMENSIONS SONT POUCES [millimètres] ET S'APPLIQUENT APRÈS FINITION.	DESSIN PAR: DRAWN BY: P.PRIEUR	12AU09		7301, Decarie Boul Montreal, QC Canada H4P 2G7 www.kaba-ilco.com
		PROJECTION 3iem ANGLE THIRD ANGLE PROJECTION	UNLESS OTHERWISE SPECIFIED, DIMENSIONS ARE INCHES [millimeters] AND APPLY AFTER FINISH.	CONCU PAR: DESIGNED BY: A.TOLEDANO		
NE PAS MESURER SUR LE DESSIN DO NOT SCALE DRAWING			APPROUVE PAR: APPROVED BY: -	-	630, 730, 750, 79E, E-PLEX 2000 AND POWER-PLEX 2000 LOCK SERIES DOOR PREPARATION DRAWING ARROW RIM S3888, ARROW SURFACE ROD S3788	
DIMENSIONING AND TOLERANCING AS PER AMERICAN SOCIETY OF MECH ENGINEERS ASME Y14.5-1994 CE DOCUMENT EST LA PROPRIETE STRICTE DE KABA. LES DONNEES QUI IL CONTIENT NE PEUVENT ETRE COPIEES OU DIVULGUEES A UNE TIERCE PARTIE SANS LE CONSENTEMENT ECRIT DE KABA. CE DOCUMENT DEVRA ETRE RETOURNE SUR DEMANDE A KABA. THIS DOCUMENT IS PROPERTY OF KABA. THE DATA CONTAINED IS PROPRIETARY AND SHALL NOT BE COPIED OR DISCLOSED TO A THIRD PARTY WITHOUT WRITTEN CONSENT OF KABA. THIS DOCUMENT WILL BE RETURNED TO KABA UPON DEMAND. UNE VERSION FRANCAISE DE CE DOCUMENT EST DISPONIBLE SUR DEMANDE.			TOLERANCES:		MATERIAU / MATERIAL	
THIS DRAWING HAS SPECIFIC TOLERANCES, SEE NOTES			NOT APPLICABLE		FORMAT NO PIECE / PART NO:	
CE DESSIN A DES TOLERANCES SPECIFIQUES, VOIR LES NOTES			NOT APPLICABLE		NO DESSIN / DRAWING NO:	
			TRAITEMENT THERMIQUE / HEAT TREATMENT		B	
			NOT APPLICABLE		ECH SCALE SEE VIEWS	
					PG SHT 1 DE OF 2	

REVISIONS
SEE PAGE 1



SCALE 1:2

VERSION 4

RHR LOCK

<small>CE DOCUMENT EST LA PROPRIETE STRICTE DE KABA. LES DONNEES QU'IL CONTIENT NE PEUVENT ETRE COPIEES OU DIVULGUEES A UNE TIERCE PARTIE SANS LE CONSENTEMENT ECRIT DE KABA. CE DOCUMENT DEVRA ETRE RETOURNE SUR DEMANDE A KABA.</small> <small>THIS DOCUMENT IS PROPERTY OF KABA. THE DATA CONTAINED IS PROPRIETARY AND SHALL NOT BE COPIED OR DISCLOSED TO A THIRD PARTY WITHOUT WRITTEN CONSENT OF KABA. THIS DOCUMENT WILL BE RETURNED TO KABA UPON DEMAND.</small> <small>UNE VERSION FRANCAISE DE CE DOCUMENT EST DISPONIBLE SUR DEMANDE.</small>	<b>KABA®</b>		7301, Decarie Boul Montreal, QC Canada H4P 2G7 www.kaba-ilco.com	
	<small>FORMAT</small> <b>B</b>	<small>NO PIECE / PART NO:</small> N/A	<small>NO DESSIN / DRAWING NO:</small> IP-513127	<small>PG SHT</small> 2
FOR COMPLETE TITLE REFER TO PAGE 1				