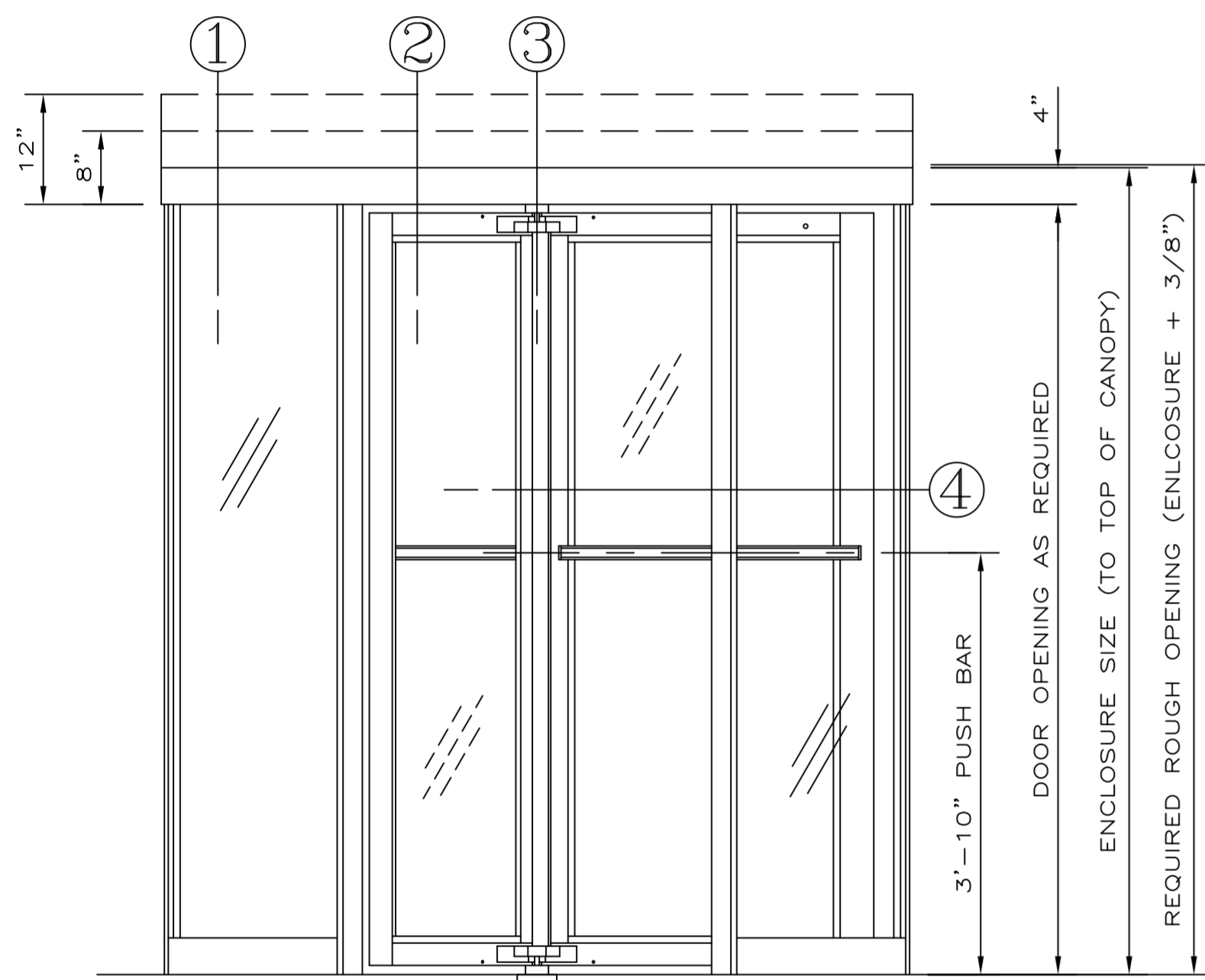
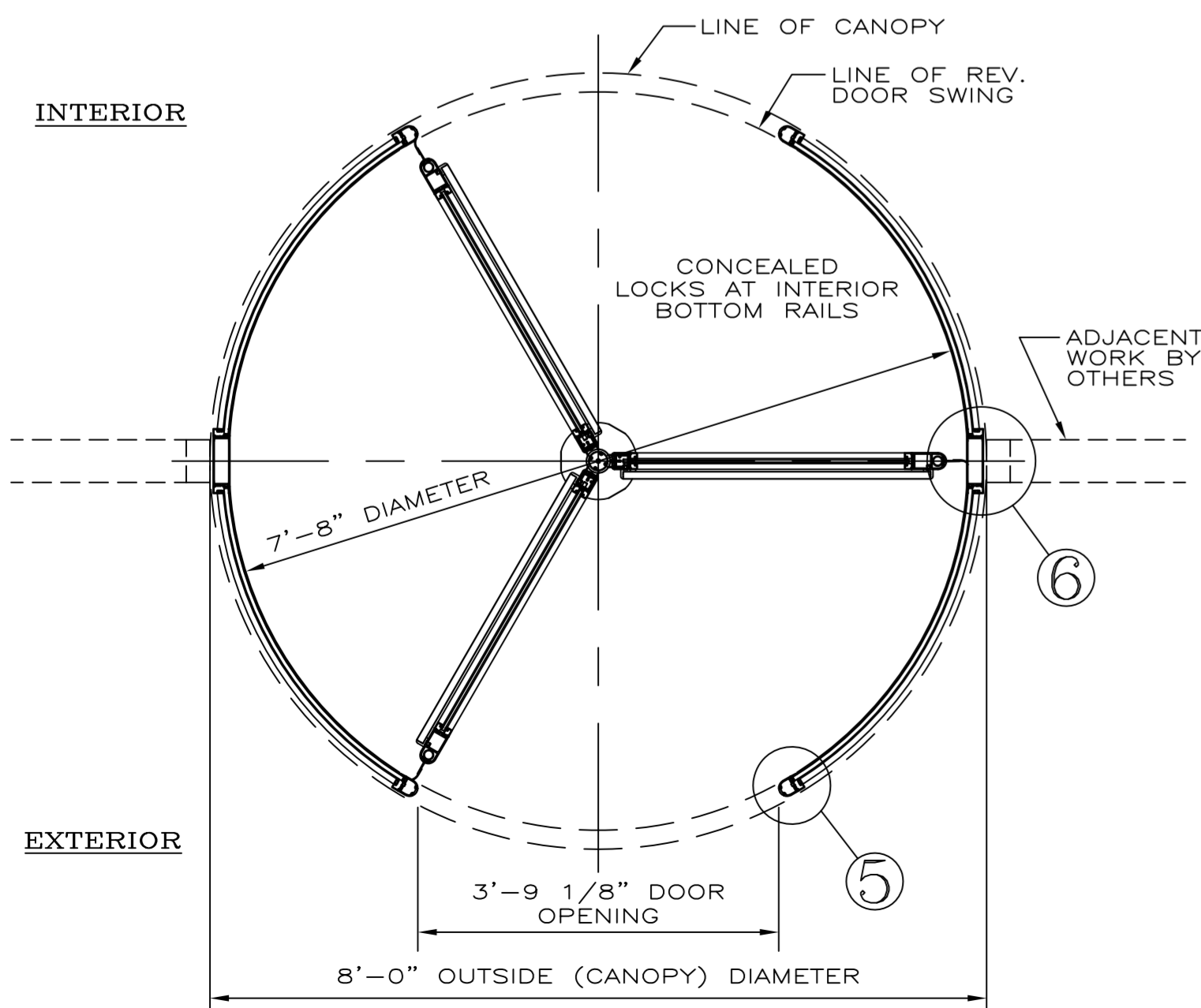


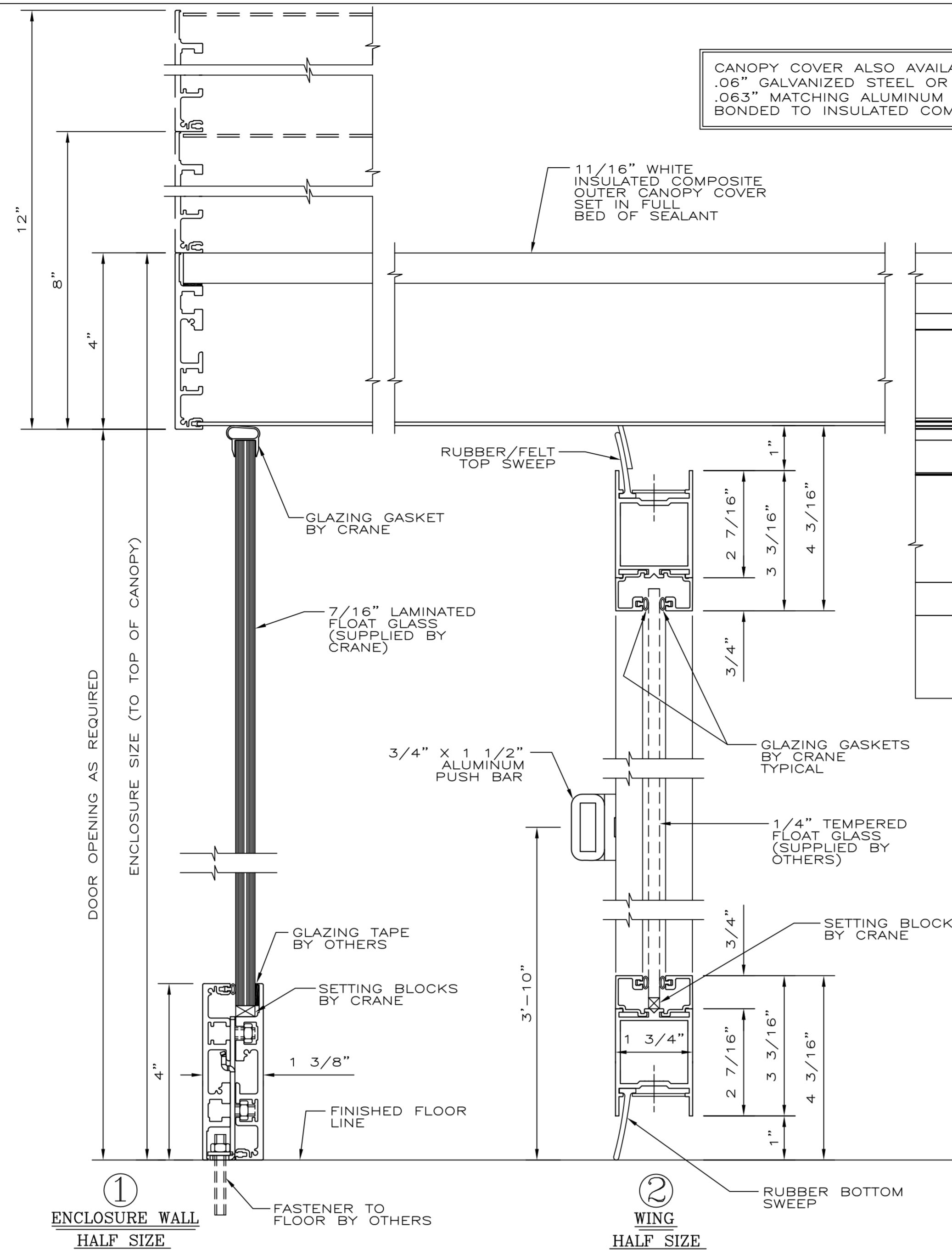
CANOPY REINFORCING PLAN
SCALE: NONE



ELEVATION
ONE (1) DOOR REQUIRED THUS
SCALE: NONE

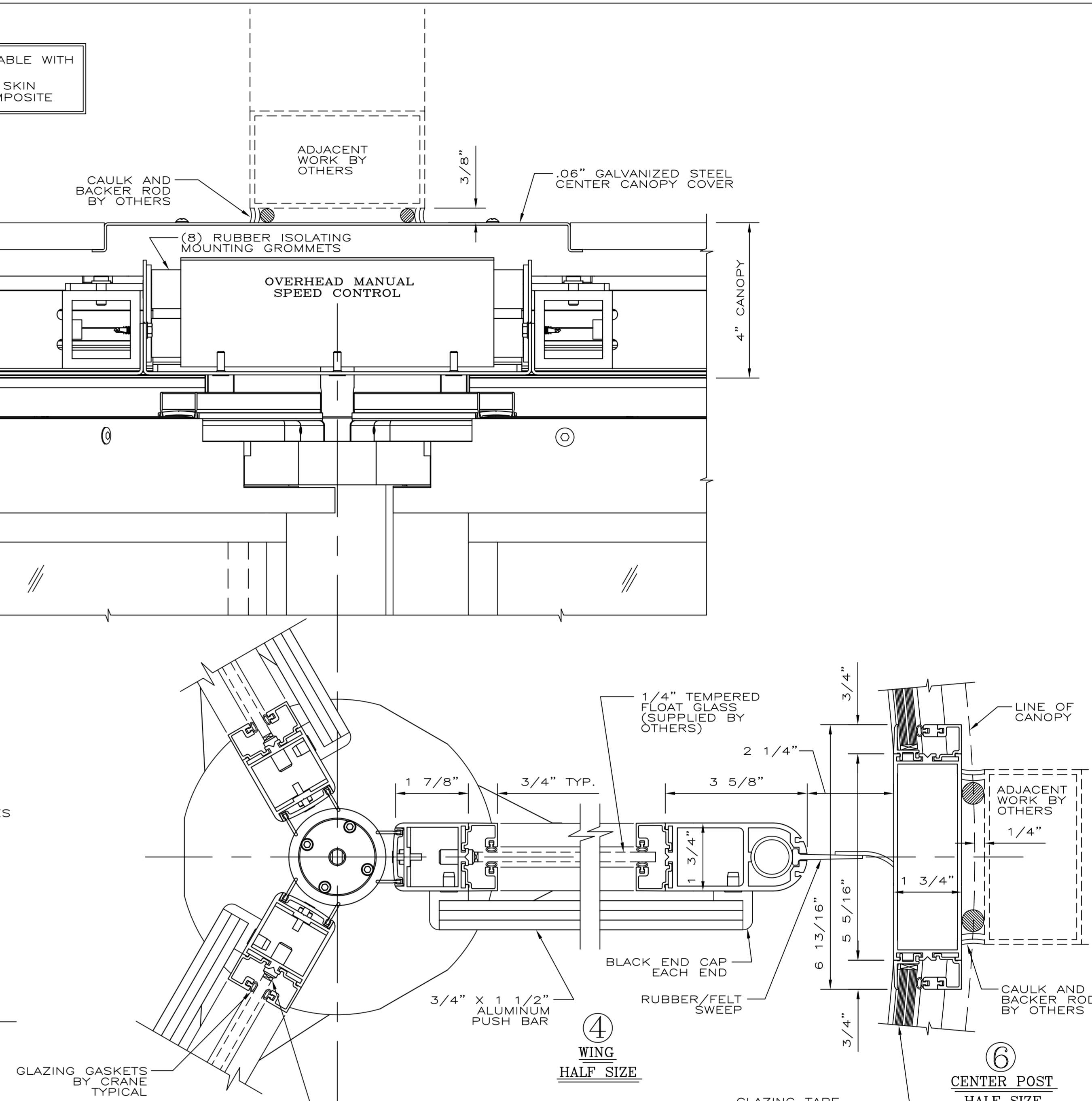


PLAN
SCALE: NONE



ENCLOSURE WALL
HALF SIZE

WING
HALF SIZE



WING
HALF SIZE

CENTER POST
HALF SIZE

QUARTER POST
HALF SIZE

CRANE 1000 ALUMINUM 3 WING REVOLVING DOOR				
INSIDE DIA.	OUTSIDE DIA.	RECOMMENDED ROUGH OPENING WIDTH	DOOR OPENING WIDTH	BOOK-FOLD EGRESS
7'-8"	8'-0"	8'-0 1/2"	3'-9 1/8"	3'-0 1/8"

GENERAL NOTES

CONTRACTOR SHOULD CHECK & TAKE NOTE OF ALL DIMENSIONS AS CRANE REVOLVING DOOR ASSUMES NO RESPONSIBILITY BEYOND MANUFACTURING IN ACCORDANCE WITH THE DIMENSIONS SHOWN ON SHOP DRAWINGS.

APPROVAL INDICATES THAT THIS SHOP DRAWING HAS BEEN CHECKED AND THAT YOU AUTHORIZE US TO FABRICATE MATERIALS AS SHOWN HERE-IN.

REVOLVING DOOR PERIMETER CAULKING (INCLUDING BASE SECTION TO FLOOR AND CANOPY COVER CAULKING NOT BY CRANE ALL HOLES IN FLOOR NOT BY CRANE DESIGN MAY CHANGE WITHOUT NOTICE.

MATERIAL TO BE:
EXTRUDED ALUMINUM OF 6063-T5 ALLOY. SHEET ALUMINUM OF 5005-H34 AQ ALLOY. (UNLESS OTHERWISE SPECIFIED)

FINISH TO BE:
CLEAR OR DARK BRONZE STANDARD ANODIZED. CUSTOM ANODIZED AND PAINTED DOORS ARE AVAILABLE.

GLASS TO BE: CLEAR
1/4" TEMPERED FLOAT FOR WINGS (SUPPLIED BY OTHERS)
7/16" BENT LAMINATED FLOAT FOR ENCLOSURE (SUPPLIED BY CRANE)
GLASS TO MEET ANSI Z97.1 AND 16 CFR 1201. ALL TEMPERED GLASS TO HAVE SAFETY LOGOS.

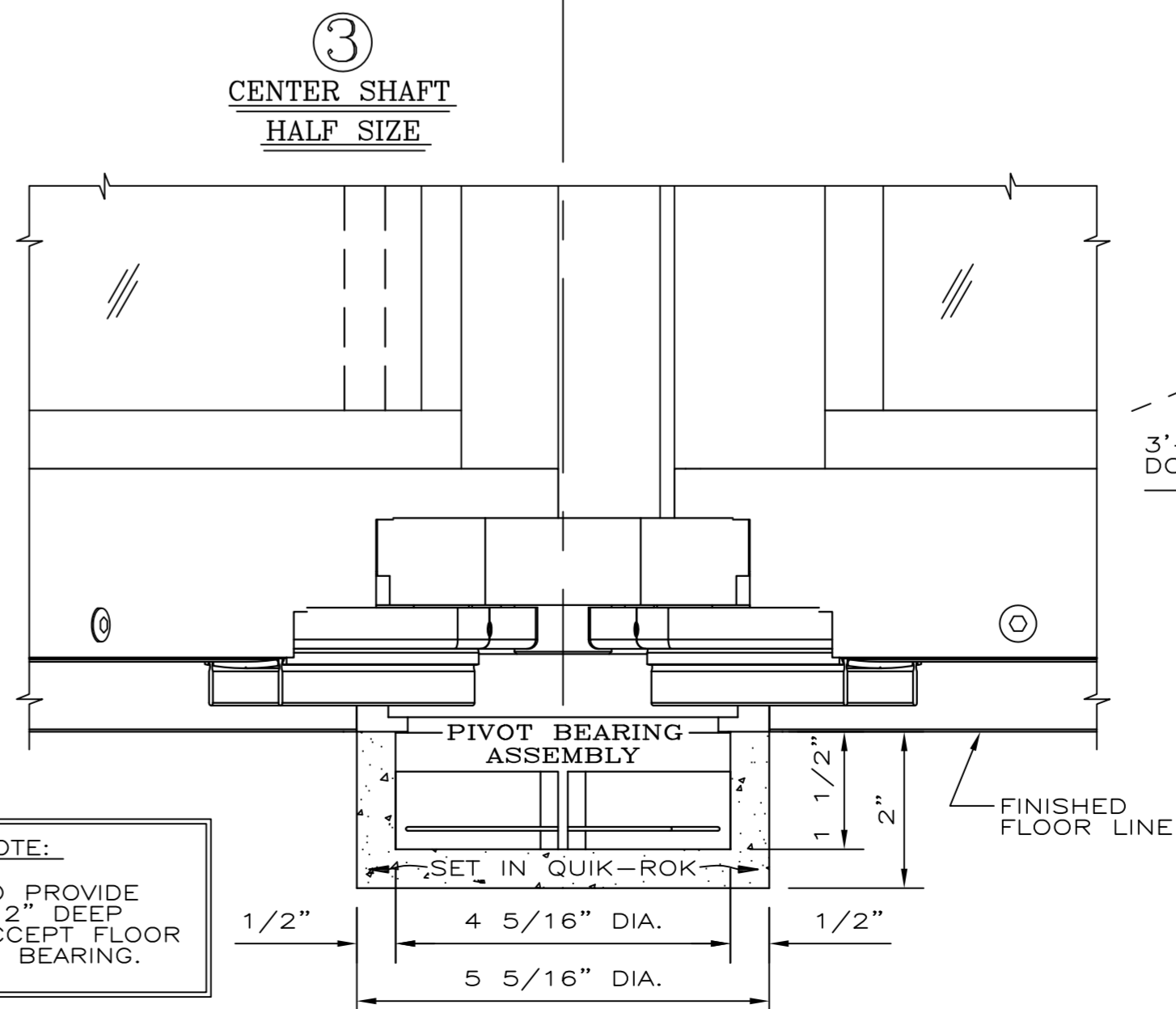
HARDWARE SCHEDULE

- OVERHEAD MANUAL SPEED CONTROL UNIT.
- FLOOR MOUNTED PIVOT BEARING ASSEMBLY.
- FULVIEW II PANIC PROOF BOOK-FOLD MECHANISM IN COMPLIANCE WITH ALL APPLICABLE REGULATIONS.
- LOCKS: CONCEALED REV. DOOR TYPE TWO (2) REQUIRED INSTALLED AT BOTTOM RAILS OF TWO ADJACENT WINGS FOR INTERIOR LOCKING. (2) DUST PROOF FLOOR STRIKES PROVIDED PER DOOR.
- CYLINDERS: STANDARD SIZE MORTISE TYPE, TWO (2) REQUIRED PER REV. DOOR UNIT, TO BE SUPPLIED BY CRANE.
- PUSH BARS: 3/4" X 1 1/2" ALUMINUM, FINISH TO MATCH DOOR.
- CEILING LIGHTS (OPTIONAL): TWO (2) SPECIAL FLUORESCENT REV. DOOR TYPE, COMPLETE WITH LENS & SNAP-IN RING. FC8T9 CIRCLINE LAMP & 110 V.A.C. WIRING NOT BY CRANE.

NOTE: HANGERS AND DISKS ARE ALWAYS DARK STATUARY FINISHED. CENTER SHAFTS AND BUMBERS ARE ALWAYS BLACK ANODIZED.

INSTALLER NOTE:
BOOK-FOLD TENSION IS NOT PRESET; IT MUST BE ADJUSTED TO MEET BUILDING CONDITIONS.

CONTRACTOR NOTE:
CONTRACTOR TO PROVIDE A 5 5/16" X 2" DEEP CUT OUT TO ACCEPT FLOOR MOUNTED PIVOT BEARING.



CRANE **DORMA**
REVOLVING DOORS™

PHONE : 847-295-2700 FAX : 847-295-5288

SCALE : AS SHOWN JOB NAME : CRANE 1000 SERIES REVOLVING DOOR

DRAWN BY : JG

REVISION : 06/20/09

CHECKED BY : JAV-Z

ORD. NO. : ALUMINUM

DATE : 08/23/07 SHEET | OF | DRAWING NO. : DS2950-02